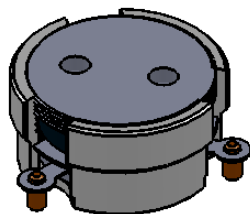
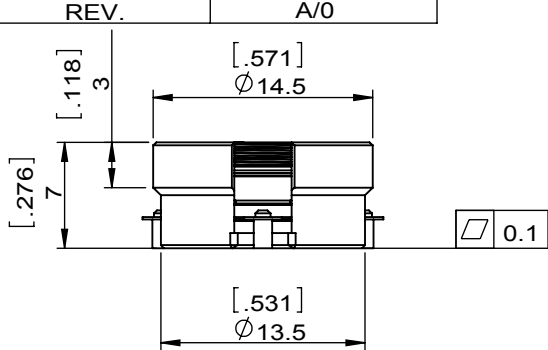
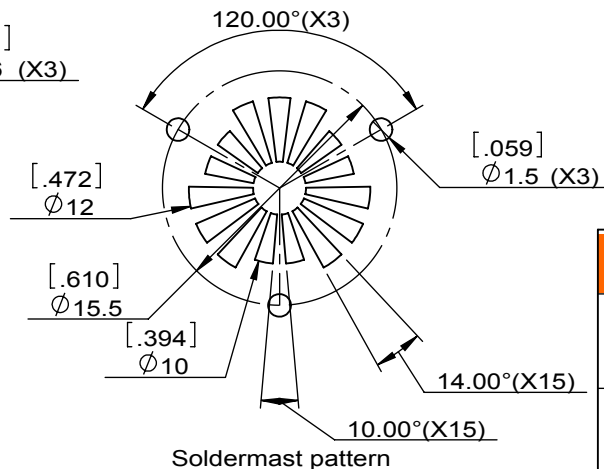
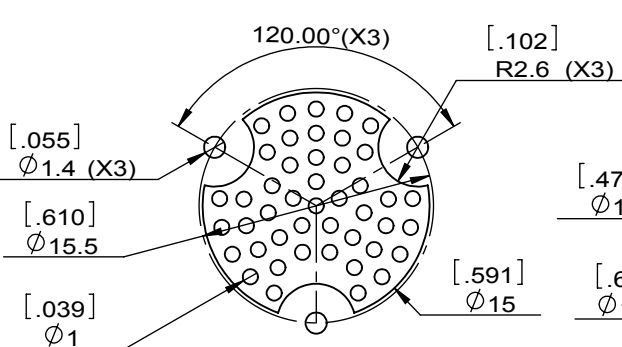
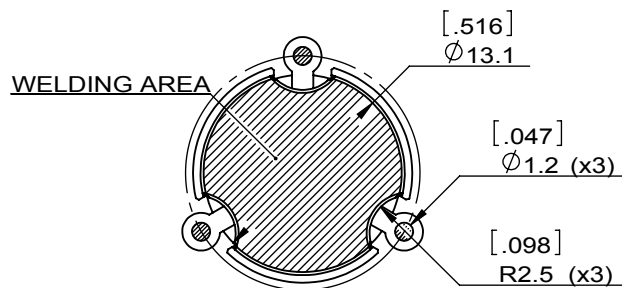
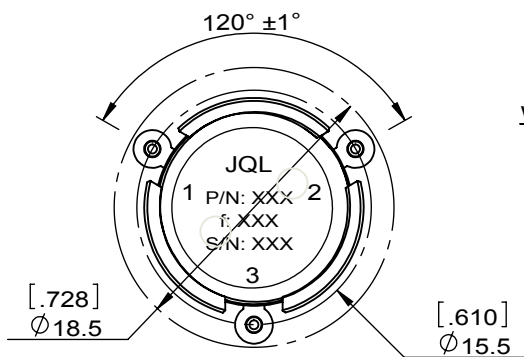


| | | | | | | | | | | | |
|--------------|---------------|------|-----|------|-------------|---------|------------|----------|--|---|--|
| 1 | | 2 | | 3 | | 4 | | 5 | | 6 | |
| Document No. | QR4-700-T-003 | REV. | A/0 | REV. | DESCRIPTION | REVISOR | DATE | APPROVED | | | |
| | | | | 0 | | ZC.Wu | 11.03.2015 | David | | | |



| SPECIFICATIONS | |
|---------------------------------|---|
| Part's Number | JCM2110T2175PM8 |
| Frequency(GHz) | 2.110~2.175 |
| Direction | CW |
| Insertion Loss(dB)MAX | 0.32 Type:0.25 |
| Isolation(dB)MIN | 20.0 Type:23.0 |
| Return Loss(dB)MIN | 20.0 Type:23.0 |
| 3rd IMD(dBc)MAX | - |
| Power FWD/REV/PK(Watt) | 80/80/500 |
| Operating Temperature(°C) | -40~+115 |
| Storage Temperature(°C) | -55~+125 |
| Harmonic attenuation(dBc) | 10@4220 to 4340 Type:20@4220 to 4340 |
| Termination/Attenuator(Watt/dB) | |
| Additional Notes | - |



Copper pattern

Soldermast pattern



This document is the property of JQL Electronic Inc. It cannot be copied, duplicated, used for manufacturing purposes or communicated to third party as a whole or partly, without the written consent of JQL Electronic Inc.

| | | | |
|--------------------------------------|--|---|------------|
| JQL JQL Electronic Inc | | DWG NO: JCM2110T2175PM8 | |
| MATERIAL: STEEL | | DWG BY: | ZC.Wu |
| SURFACE TREATMENT: SLIVER PLATING | | CHK'D BY: | |
| DESCRIPTION: SMT CIRCULATOR | | APPV'D BY: | |
| Unit: mm[inch] | | Tolerance: Liner: ±0.25 Anguar: ±0.5° | The First: |
| | | SCALE 1.5:1 | |
| | | A4 | |