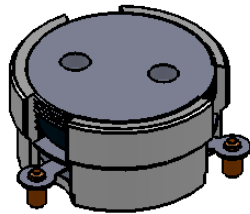
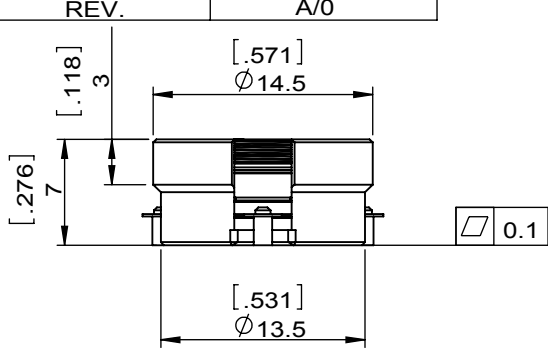
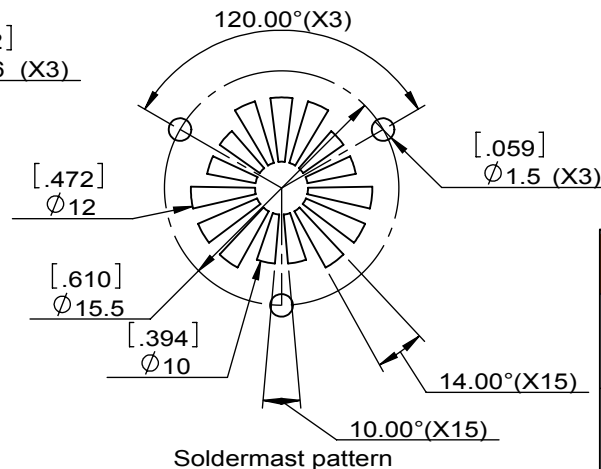
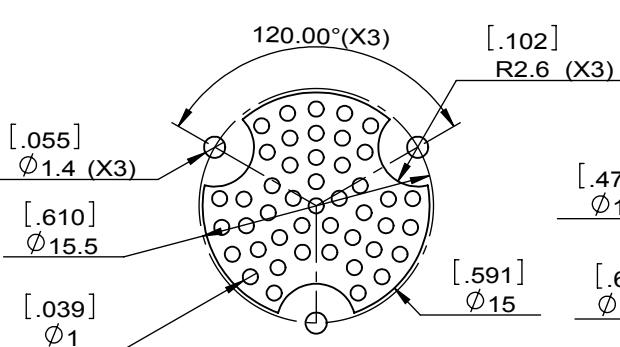
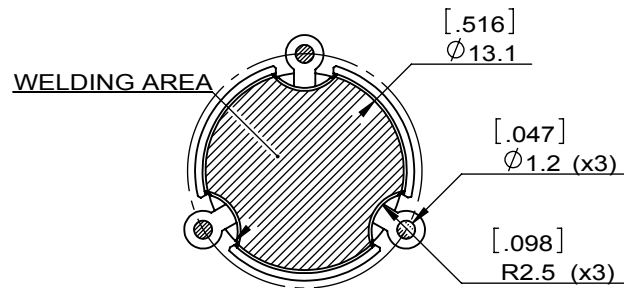
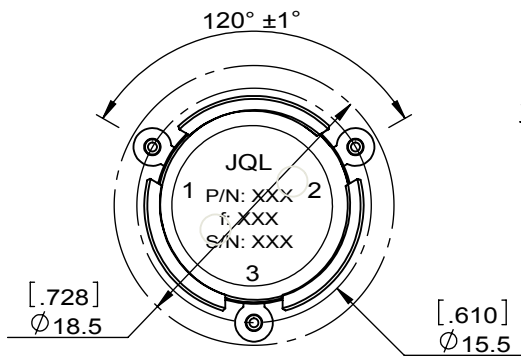


1		2		3		4		5		6	
Document No.	QR4-700-T-003	REV.	A/0	REV.	DESCRIPTION	REVISOR	DATE	APPROVED			
				0		ZC.Wu	11.03.2015	David			



SPECIFICATIONS	
Part's Number	JCM2490T2710PM6
Frequency(GHz)	2.490~2.710
Direction	CW
Insertion Loss(dB)MAX	0.35
Isolation(dB)MIN	21.0
Return Loss(dB)MIN	20.0
3rd IMD(dBc)MAX	-
Power FWD/REV/PK(Watt)	60/60/
Operating Temperature(°C)	-40~+85
Storage Temperature(°C)	-55~+125
Harmonic attenuation(dBc)	
Termination/Attenuator(Watt/dB)	
Additional Notes	-



Copper pattern

Soldermast pattern



This document is the property of JQL Electronic Inc. It cannot be copied, duplicated, used for manufacturing purposes or communicated to third party as a whole or partly, without the written consent of JQL Electronic Inc.

JQL JQL Electronic Inc		MATERIAL: STEEL		DWG NO: JCM2490T2710PM6	
SURFACE TREATMENT: SLIVER PLATING		DWG BY:	ZC.Wu	11.03.2015	SCALE
DESCRIPTION: SMT CIRCULATOR		CHK'D BY:			1.5:1
		APPV'D BY:			
		Unit: mm[inch]	Tolerance: Liner: ±0.25 Anguar: ±0.5°	The First:	A4