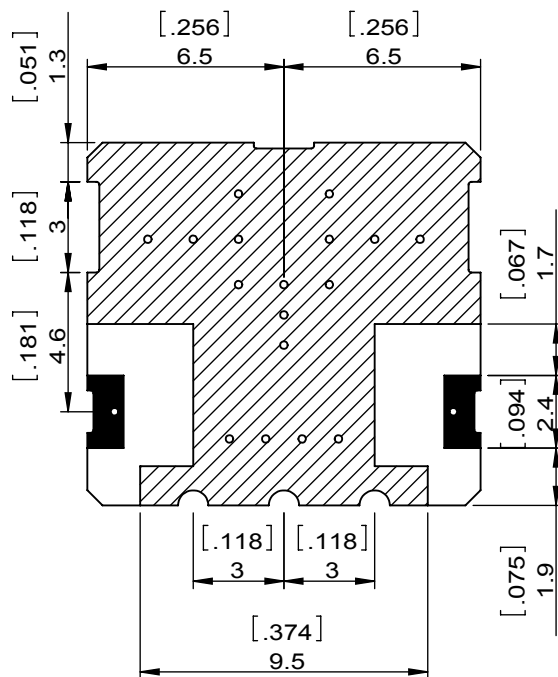
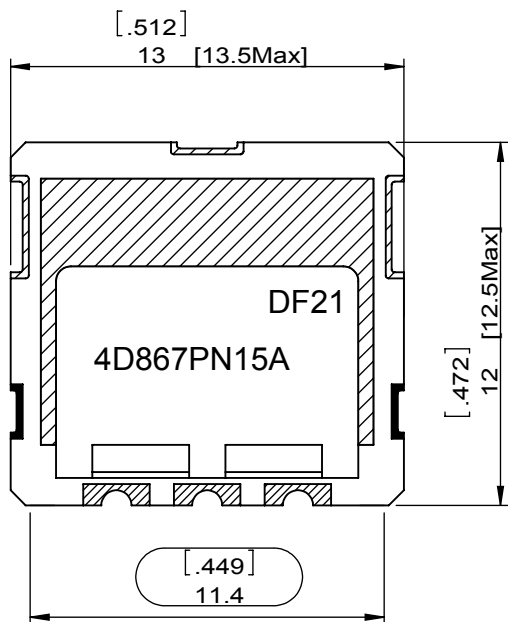


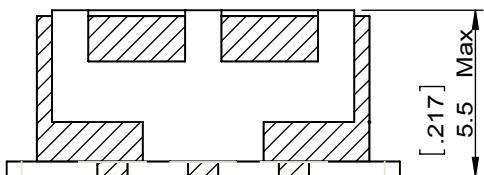
1		2		3		4		5		6	
Document No.	QR4-700-T-003	REV.	A/0	REV.	DESCRIPTION	REVISOR	DATE	APPROVED			
				0		YQ.XIE	11.12.2015	David			

TOP VIEW

BOTTOM VIEW



FRONT VIEW



GROUND



I/O PORT

TOLERANCE: ±0.20  
Unit:mm

ITEMS	SPECIFICATIONS
Center Frequency[fo] (MHz)	867.5
Bandwidth[BW] (MHz)	fo±7.5 Min [860.0~875.0]
Insertion Loss in BW(dB)	2.5
Ripple in BW (dB)	0.5
Return Loss in BW(dB)	18.00
Attenuation (dBc) Relative Value	45.0 Min @ fo ± [820.0 & ] TYP 50.0 Min @ fo ± [820.0 & ] 45.0 Min @ fo ± [915.0 & ] TYP 50.0 Min @ fo ± [915.0 & ]
Input Power(w)	2.0
In/Out Impedance	50Ω
Operation Temperature Range(°C)	-40~+85
Additional Notes	-

**JQL** JQL Electronic Inc

**MATERIAL:** - **DWG NO:** JRP867F4R15SA

**SURFACE TREATMENT:**

DWG BY:	YQ.XIE	11.12.2015	SCALE
CHK'D BY:			
APPV'D BY:			4:1
Unit: mm[inch]	Tolerance: Liner: ±0.25 Anguar: ±0.5°	The First:	A4

**DESCRIPTION:** FILTER



This document is the property of JQL Electronic Inc. It cannot be copied, duplicated, used for manufacturing purposes or communicated to third party as a whole or partly, without the written consent of JQL Electronic Inc.

WEIGHT: