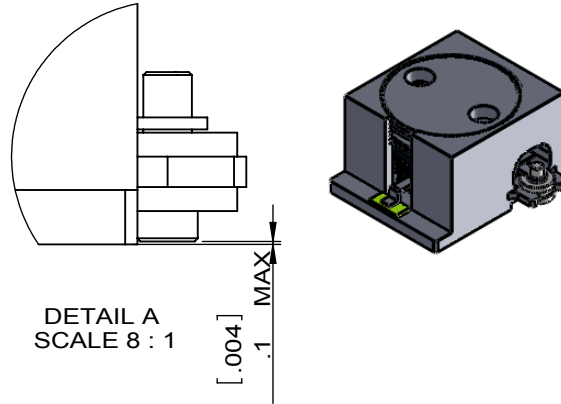
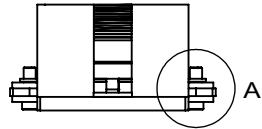
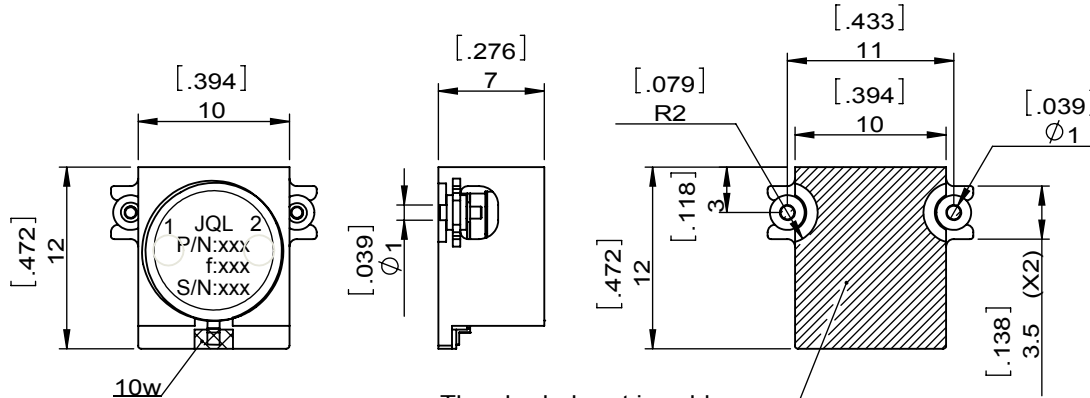


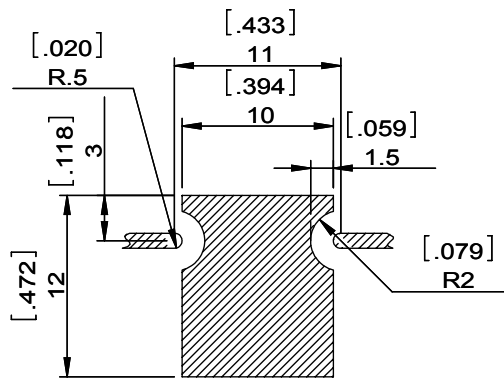
| | | | | | | | | | | | |
|--------------|---------------|------|-----|------|-------------|---------|------------|----------|--|---|--|
| 1 | | 2 | | 3 | | 4 | | 5 | | 6 | |
| Document No. | QR4-700-T-003 | REV. | A/0 | REV. | DESCRIPTION | REVISOR | DATE | APPROVED | | | |
| | | | | 0 | | ZC.Wu | 03.10.2016 | David | | | |



DETAIL A
SCALE 8 : 1



The shaded part is solder area



| SPECIFICATIONS | |
|---------------------------------|-----------------|
| Part's Number | JIM2100T2170WM1 |
| Frequency(GHz) | 2.100~2.170 |
| Direction | CW |
| Insertion Loss(dB)MAX | 0.4 |
| Isolation(dB)MIN | 20.0 |
| Return Loss(dB)MIN | 20.0 |
| 3rd IMD(dBc)MAX | -- |
| Power FWD/REV/PK(Watt) | 10/5/- |
| Operating Temperature(°C) | -20~+80 |
| Storage Temperature(°C) | -- |
| 2nd/3rd Harmonic(dBc) | - |
| Termination/Attenuator(Watt/dB) | 10 |
| Tab(W×LG×THK)(mm[Inch]) | |
| Additional Notes | - |

| | | | | |
|---|--|-----------------------------------|---|----------------|
| JQL JQL Electronic Inc | | | | |
| MATERIAL: STEEL | | DWG NO: JIM2100T2170WM1 | | |
| SURFACE TREATMENT: SILVER PLATING | | DWG BY: | ZC.Wu | 03.10.2016 |
| DESCRIPTION: SMT ISOLATOR | | CHK'D BY: | | SCALE |
| | | APPV'D BY: | | 2:1 |
| | | Unit: mm[inch] | Tolerance: Liner: ±0.25 Anguar: ±0.5° | The First: |
| | | | | A4 |



This document is the property of JQL Electronic Inc. It cannot be copied, duplicated, used for manufacturing purposes or communicated to third party as a whole or partly, without the written consent of JQL Electronic Inc.

WEIGHT: