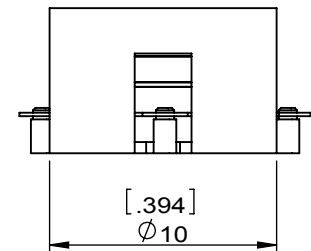
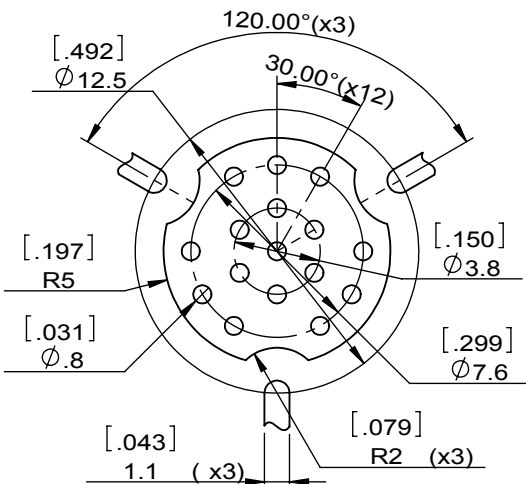
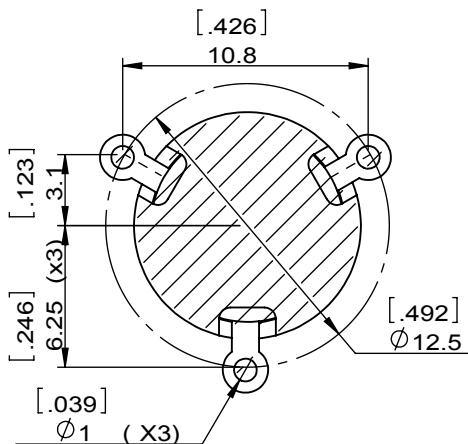
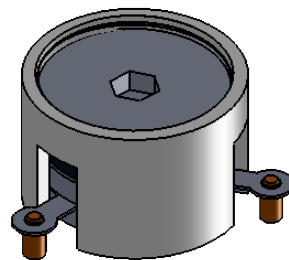
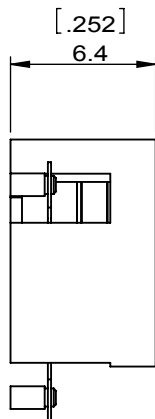
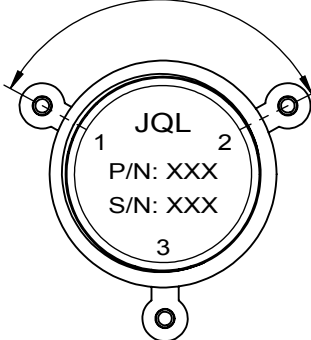


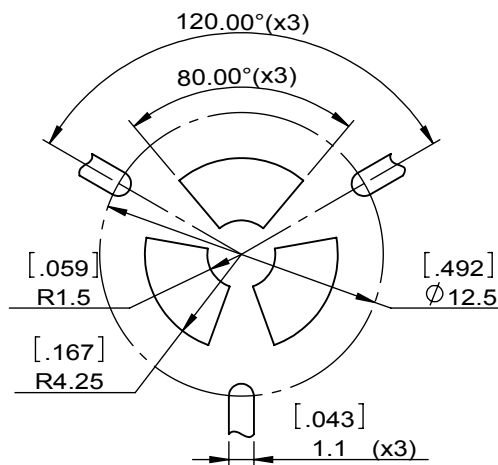
1		2		3		4		5		6	
Document No.	QR4-700-T-003					REV.	DESCRIPTION	REVISOR	DATE	APPROVED	
REV.	A/0					0		Hu.Jiang	07.24.2018	HC.Qiu	



125.05°(X3)



Copper Pattern



Soldermask Pattern

SPECIFICATIONS	
Part's Number	JCM4800T5000PT1
Frequency(GHz)	4.800~5.000
Direction	CW
Insertion Loss(dB)MAX	0.25@+25±5°C 0.3@-40~+95
Isolation(dB)MIN	23.0@+25±5°C 20.0@-40~+95
Return Loss(dB)MIN	23.0@+25±5°C 20.0@-40~+95
3rd IMD(dBc)MAX	-60@2x20W ,Spacing 5MHz(Customer testing)
Power FWD/REV/PK(Watt)	100/50/200
Operating Temperature(°C)	-40~+95
Storage Temperature(°C)	
2nd/3rd Harmonic(dBc)	
Termination/Attenuator(Watt/dB)	
Tab(W×LG×THK)(mm[Inch])	-
Additional Notes	

<b>JQL</b> JQL Electronic Inc				
<b>MATERIAL:</b> STEEL		<b>DWG NO:</b> JCM4800T5000PT1		
<b>SURFACE TREATMENT:</b> SILVER PLATING		DWG BY:	Hu.Jiang	07.24.2018
<b>DESCRIPTION:</b> SMT CIRCULATOR		CHK'D BY:		SCALE
		APPV'D BY:		3:1
		Unit: mm[inch]	Tolerance: Liner: ±0.25 Anguar: ±0.5°	The First: 
				A4



This document is the property of JQL Electronic Inc. It cannot be copied, duplicated, used for manufacturing purposes or communicated to third party as a whole or partly, without the written consent of JQL Electronic Inc.