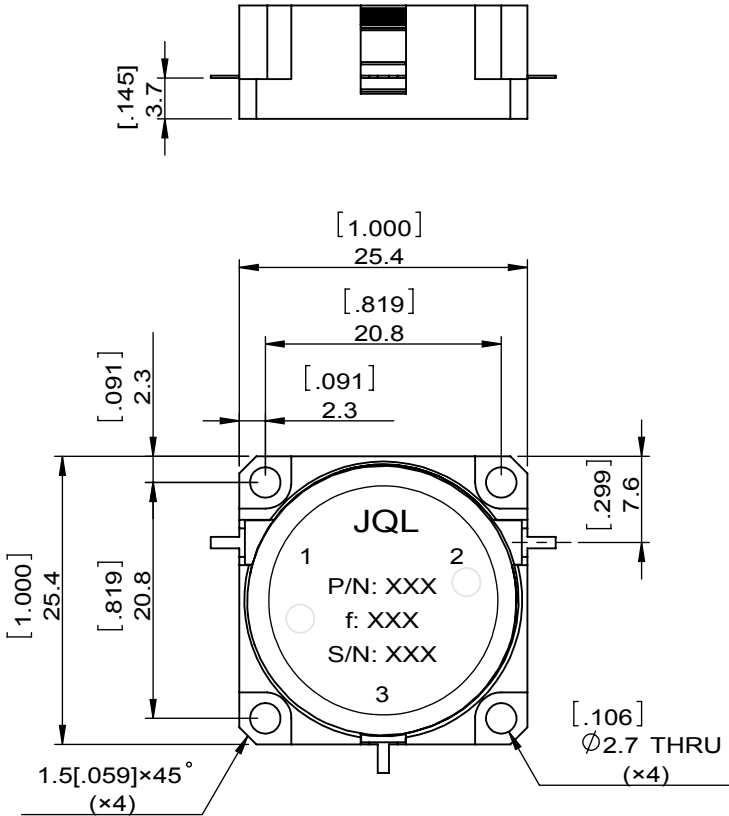
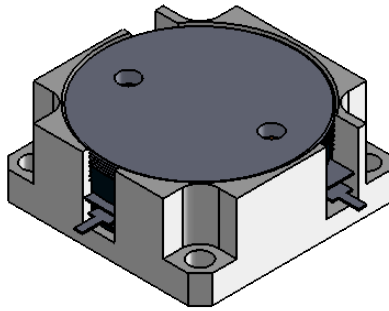


1		2		3		4		5		6	
Document No.	QR4-700-T-003	REV.	A/0	REV.	DESCRIPTION	REVISOR	DATE	APPROVED			
				0		Hu.Jiang	09.02.2018	HC.Qiu			



SPECIFICATIONS	
Part's Number	JCD0948T1102M10
Frequency(GHz)	0.948~1.102
Direction	CW
Insertion Loss(dB)MAX	0.3
Isolation(dB)MIN	22.0
Return Loss(dB)MIN	21.0
3rd IMD(dBc)MAX	
Power FWD/REV/PK(Watt)	100/100/500 D.C.:15% , Pulse Width: 100usec
Operating Temperature(°C)	-55~+75
Storage Temperature(°C)	-
2nd/3rd Harmonic(dBc)	-
Termination/Attenuator(Watt/dB)	-
Tab(W×LG×THK)(mm[Inch])	1.0[.0394]×2.5[.098]×0.2[.008]
Additional Notes	RTV filled all ports

NOTES:

- STANDARD INPUT/OUTPUT 50OHM IMPEDANCE
- BE0 FREE,LEAD FREE,NO Nd MATERIAL
- RoHS COMPLIANT
- S-PARAMETERS TO BE MEASURED BY CONECTING PORT 1 AND PORT 2 TO VNA, PORT 3 TO LOAD
- LOAD RETURN LOSS IS 30dB OR HIGHER WHEN TUNING



This document is the property of JQL Electronic Inc. It cannot be copied, duplicated, used for manufacturing purposes or communicated to third party as a whole or partly, without the written consent of JQL Electronic Inc.

JQL JQL Electronic Inc	
MATERIAL: STEEL	DWG NO: JCD0948T1102M10
SURFACE TREATMENT: NICKEL PLAITNG	DWG BY: Hu.Jiang 09.04.2018 SCALE
DESCRIPTION: DROP-IN CIRCULATOR	CHK'D BY: APPV'D BY: 3:2
Unit: mm[inch]	Tolerance: Liner: ±0.25 Anguar: ±0.5°
	The First:
	A4