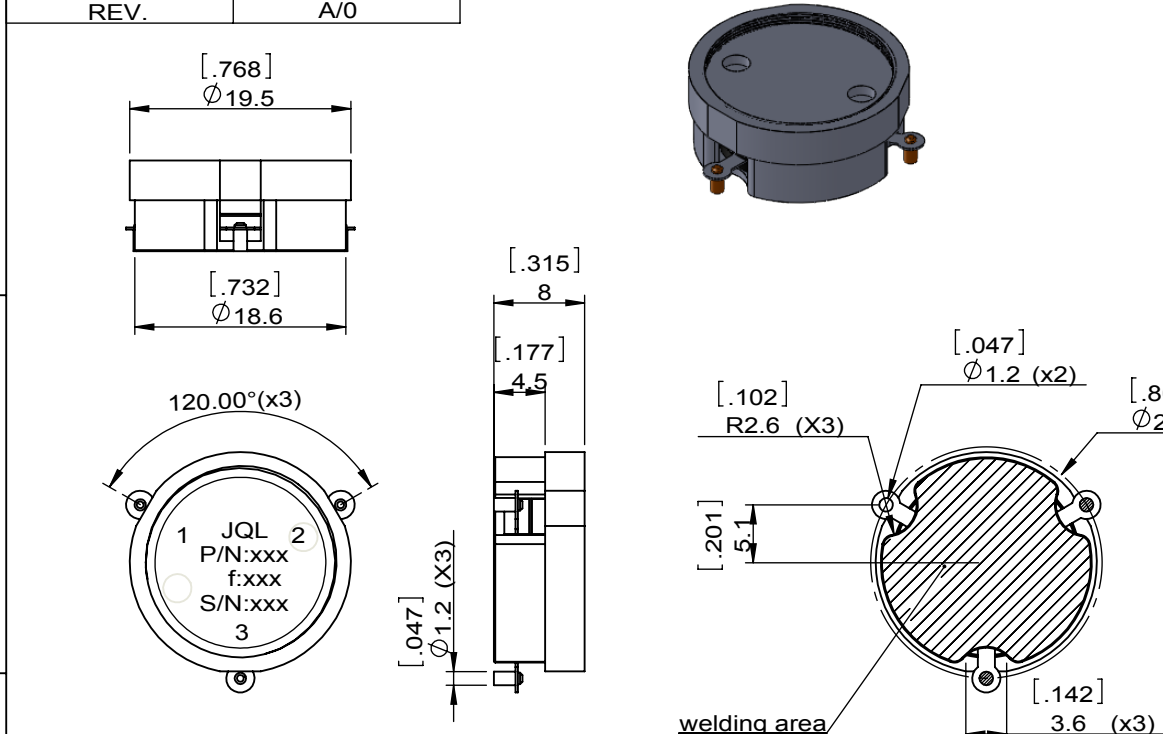
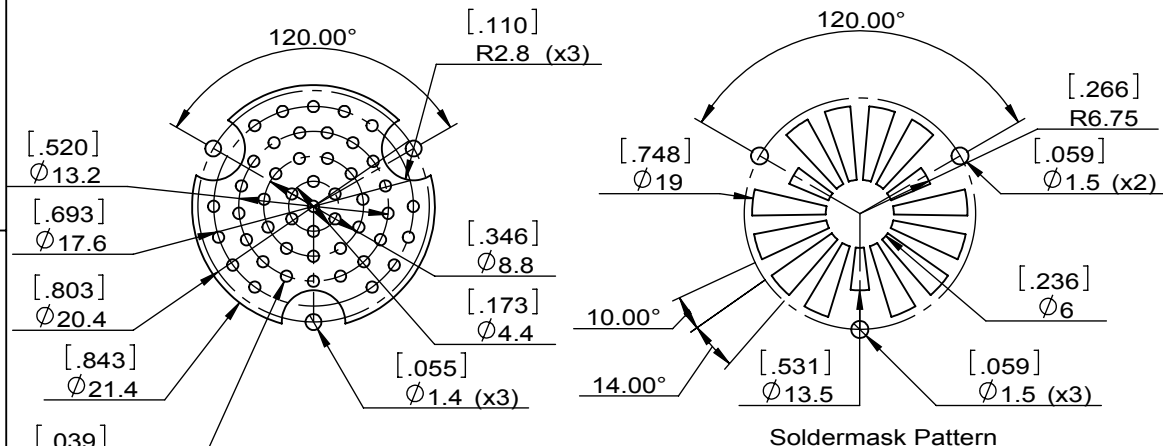


1		2		3		4		5		6	
Document No.	QR4-700-T-003	REV.	A/0	REV.	DESCRIPTION	REVISOR	DATE	APPROVED			
				0		Hu.Jiang	09.17.2018	HC.Qiu			



SPECIFICATIONS	
Part's Number	JCM3000T3600PLM40P
Frequency(GHz)	3.000~3.600
Direction	CW
Insertion Loss(dB)MAX	0.35
Isolation(dB)MIN	23.0@+25°C 21.0@-40~+85°C
Return Loss(dB)MIN	21.0
3rd IMD(dBc)MAX	
Power FWD/REV/PK(Watt)	-/-400 peak 200us pulse width 10~15% duty cycle
Operating Temperature(°C)	-40~+85
Storage Temperature(°C)	
2nd/3rd Harmonic(dBc)	-
Termination/Attenuator(Watt/dB)	
Tab(W×LG×THK)(mm[Inch])	
Additional Notes	CONTACT PIN COPLANARITY IS±0.1[0.004]



JQL Electronic Inc				
MATERIAL: STEEL		DWG NO: JCM3000T3600PLM40P		
SURFACE TREATMENT: SILVER PLATING		DWG BY:	Hu.Jiang	09.17.2018
DESCRIPTION: SMT CIRCULATOR		CHK'D BY:		SCALE
		APP'VD BY:		3:2
Unit: mm[inch]	Tolerance: Liner: ±0.25 Anguar: ±0.5°	The First:		A4



This document is the property of JQL Electronic Inc. It cannot be copied, duplicated, used for manufacturing purposes or communicated to third party as a whole or partly, without the written consent of JQL Electronic Inc.