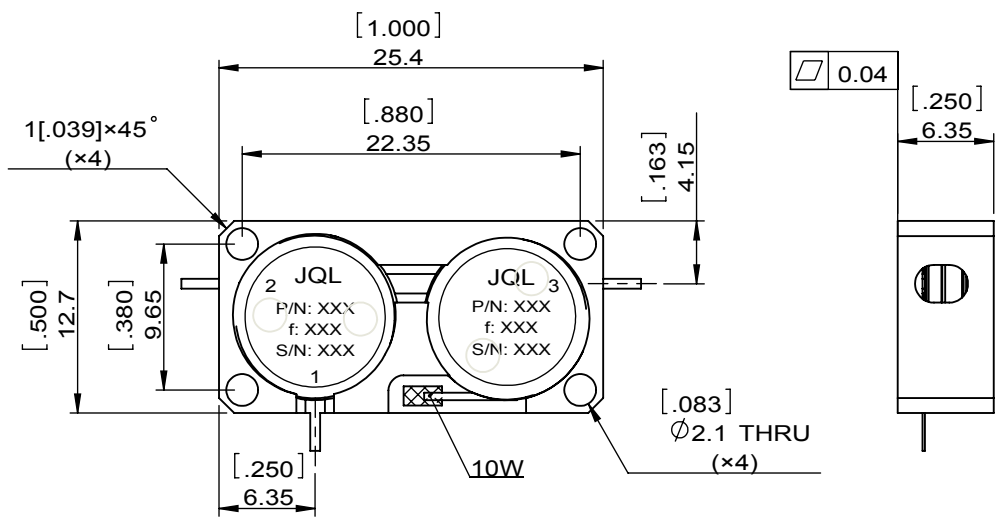
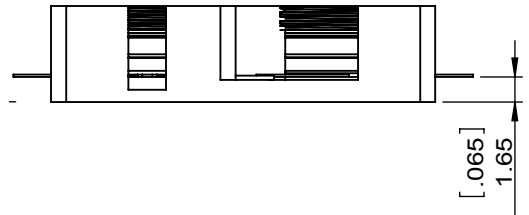
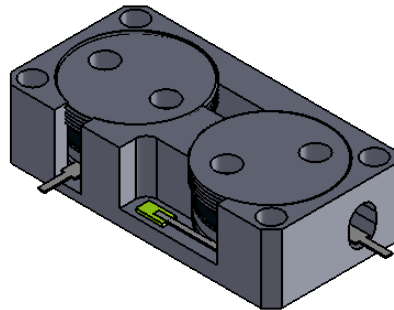


1		2		3		4		5		6			
Document No.	QR4-700-T-003	REV.	A/0	REV.	0	DESCRIPTION		REVISOR	Hu.Jiang	DATE	11.23.2017	APPROVED	HC.Qiu



SPECIFICATIONS	
Part's Number	JI2D3020T3550T1VM10
Frequency(GHz)	3.020~3.550
Direction	CW
Insertion Loss(dB)MAX	0.6@Port1 to Port2 1.5@Port2 to Port3
Isolation(dB)MIN	15.5@Port2 to Port1 32.0@Port3 to Port2 16.0@Port1 to Port3
Return Loss(dB)MIN	15.5(Port2 & Port1) 16.0@+25°C(Port2 & Port1) 13.0(Port3)
3rd IMD(dBc)MAX	-
Power FWD/REV/PK(Watt)	10/10/80 100µs D.cycle 10%
Operating Temperature(°C)	-40~+85
Storage Temperature(°C)	-40~+125
2nd/3rd Harmonic(dBc)	-
Termination/Attenuator(Watt/dB)	10W
Tab(W×LG×THK)(mm[Inch])	0.64[.025]×2.5[.098]×0.15[.006]
Additional Notes	-

<b>JQL</b> JQL Electronic Inc				
<b>MATERIAL:</b> STEEL		<b>DWG NO:</b> JI2D3020T3550T1VM10		
<b>SURFACE TREATMENT:</b> SILVER PLATING		DWG BY:	Hu.Jiang	11.23.2018
<b>DESCRIPTION:</b> DROP-IN CIRCULATOR		CHK'D BY:		SCALE
		APPV'D BY:		2:1
		Unit: mm[inch]	Tolerance: Liner: ±0.25 Anguar: ±0.5°	The First: 
				A4

**RoHS COMPLIANCE** This document is the property of JQL Electronic Inc. It cannot be copied, duplicated, used for manufacturing purposes or communicated to third party as a whole or partly, without the written consent of JQL Electronic Inc.