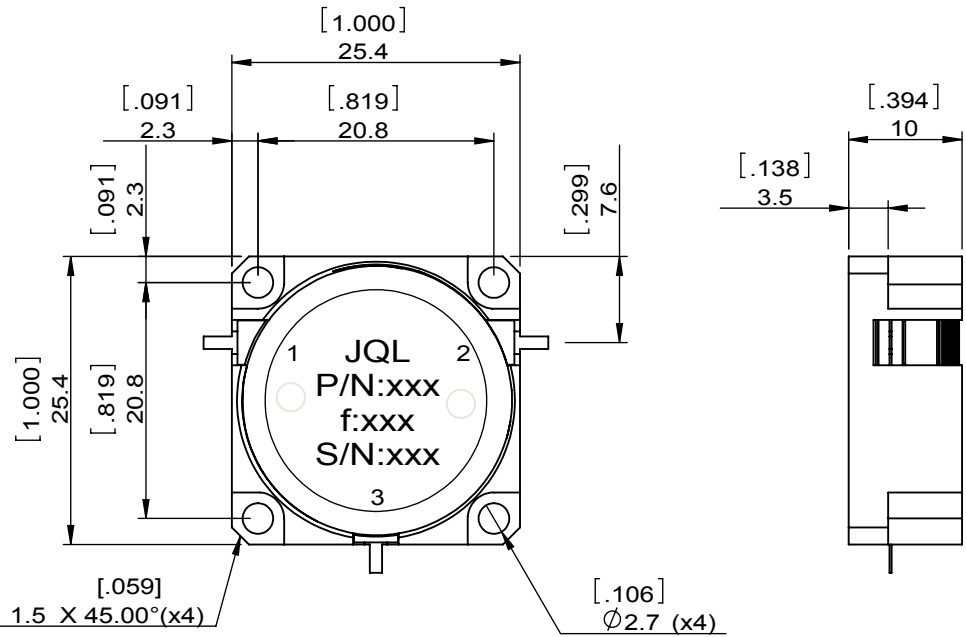
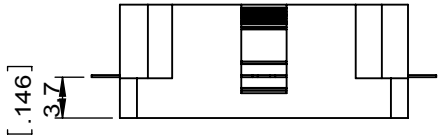
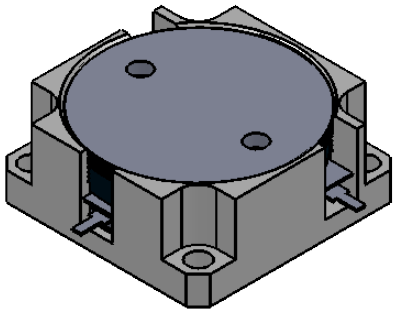


1		2		3		4		5		6	
Document No.		QR4-700-T-003		REV.		0		REV. DESCRIPTION		REVISOR	
REV.		A/0						Hu.Jiang		DATE	
								03.29.2019		APPROVED	
								HC.Qiu			



SPECIFICATIONS	
Part's Number	JCD1190T1410M60PC
Frequency(GHz)	1.190~1.410
Direction	CCW
Insertion Loss(dB)MAX	0.4
Isolation(dB)MIN	20.0
Return Loss(dB)MIN	19.0
3rd IMD(dBc)MAX	-
Power FWD/REV/PK(Watt)	-/-/600 20%DC 100usec/10% DC 1msec
Operating Temperature(°C)	-20~+85
Storage Temperature(°C)	-
2nd/3rd Harmonic(dBc)	-
Termination/Attenuator(Watt/dB)	-
Tab(W×LG×THK)(mm[Inch])	1.1[.043]x2.0[.098]x0.2[0.008]
Additional Notes	-RTV Filled , T RING NEEDED

JQL JQL Electronic Inc 500 Lake Cook Road, Suite 350 Deerfield, IL 60015, USA Tel: 1(888)236-9828 Fax: 1(888)823-2902

MATERIAL: STEEL	DWG NO: JCD1190T1410M60PC		
SURFACE TREATMENT: NICKEL PLATING	DWG BY:	Hu.Jiang	03.29.2019
DESCRIPTION: DROP-IN CIRCULATOR	CHK'D BY:		SCALE
	APPV'D BY:		3:2
Unit: mm[inch]	Tolerance: Liner: ±0.25 Anguar: ±0.5°	The First:	A4



This document is the property of JQL Electronic Inc. It cannot be copied, duplicated, used for manufacturing purposes or communicated to third party as a whole or partly, without the written consent of JQL Electronic Inc.