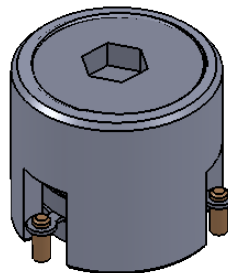
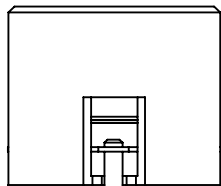
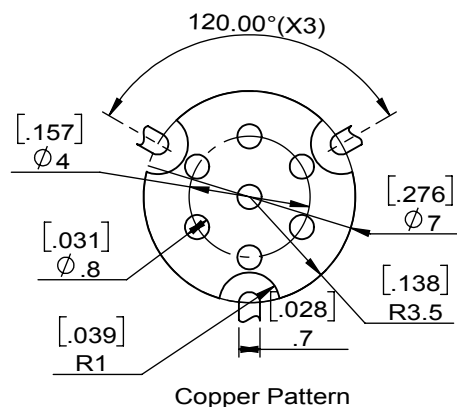
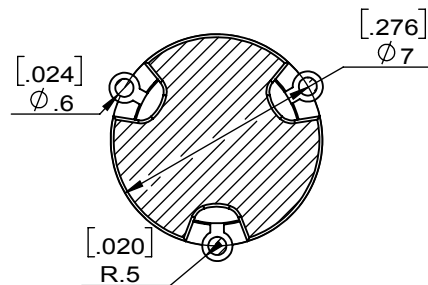
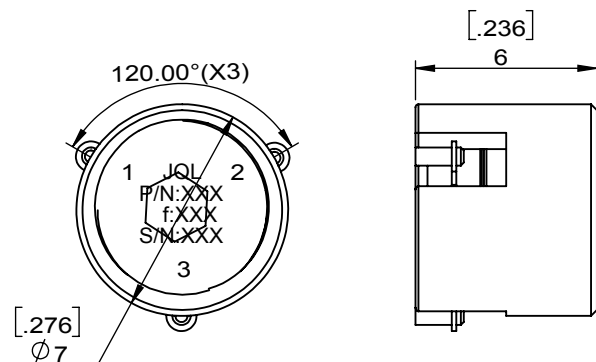


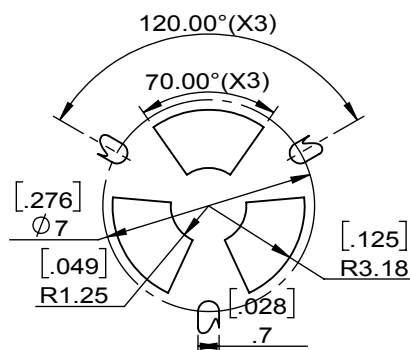
1		2		3		4		5		6	
Document No.	QR4-700-T-003	REV.	A/0	REV.	DESCRIPTION	REVISOR	DATE	APPROVED			
				0		Hu.Jiang	03.18.2019	HC.Qiu			



SPECIFICATIONS	
Part's Number	JCM3500T3700XM2
Frequency(GHz)	3.500~3.700
Direction	CW
Insertion Loss(dB)MAX	0.35
Isolation(dB)MIN	20.0
Return Loss(dB)MIN	20.0
3rd IMD(dBc)MAX	-60@2.5WX2 TONES -55@5WX2 TONES
Power FWD/REV/PK(Watt)	20/20/100
Operating Temperature(°C)	-40~+105
Storage Temperature(°C)	
Harmonic(dBc)	60(2xTX@5W) 60(3xTX@5W)
Termination/Attenuator(Watt/dB)	-
Attenuation(dB)	20@2xTX 10@3xTX 5@NxTX
Additional Notes	-



Copper Pattern



Soldermask Pattern

JQL JQL Electronic Inc				
MATERIAL: STELL		DWG NO: JCM3500T3700XM2		
SURFACE TREATMENT: SILVER PLATING		DWG BY:	Hu.Jiang	03.18.2019
DESCRIPTION: SMT CIRCULATOR		CHK'D BY:		SCALE
		APPV'D BY:		4:1
Unit: mm[inch]		Tolerance: Liner: ±0.25 Anguar: ±0.5°	The First:	A4



This document is the property of JQL Electronic Inc. It cannot be copied, duplicated, used for manufacturing purposes or communicated to third party as a whole or partly, without the written consent of JQL Electronic Inc.