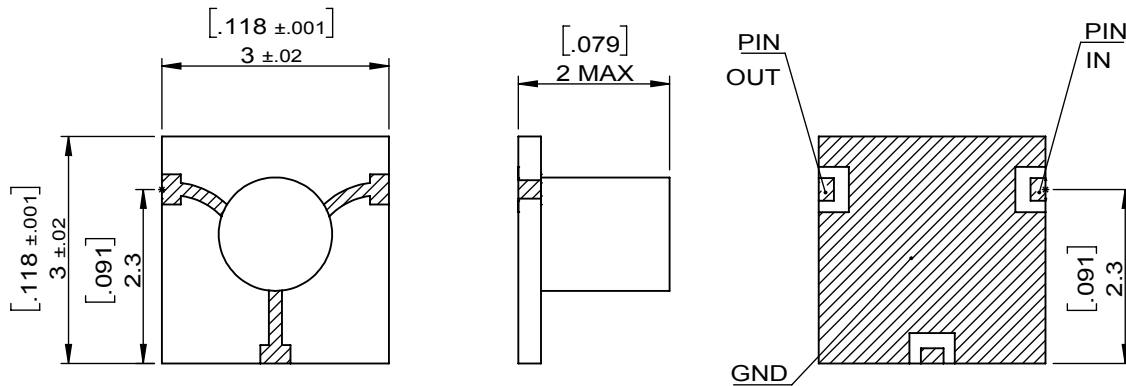


1		2		3		4		5		6	
Document No.	QR4-700-T-003					REV.	DESCRIPTION	REVISOR	DATE	APPROVED	
REV.	A/0 2					0		Hu.Jiang	03.18.2019	HC.Qiu	



SPECIFICATIONS	
Part's Number	JCSM26K5T29K5A2
Frequency(GHz)	26.500~29.500
Direction	-
Insertion Loss(dB)MAX	1.0
Isolation(dB)MIN	18.0
VSWR	1.3
3rd IMD(dBc)MAX	
Power FWD/REV/PK(Watt)	2/2/-
Operating Temperature(°C)	-30~+70
Storage Temperature(°C)	130MAX
Termination/Attenuator(Watt/dB)	
Tab(W×LG×THK)(mm[Inch])	
Additional Notes	-

Notes:

- 1.Clockwise direction.
- 2.The devices should be mounted on the NON magneic carrier or base.
- 3.RoHS compliant.
- 4.For Pb-free reflow profile with peak temperature 250°C@40second.
- 5.Humidity 5 to 95% non-condensing.
- 6.Configuration of land pattern on "PCB For 2CMSM-28-4"

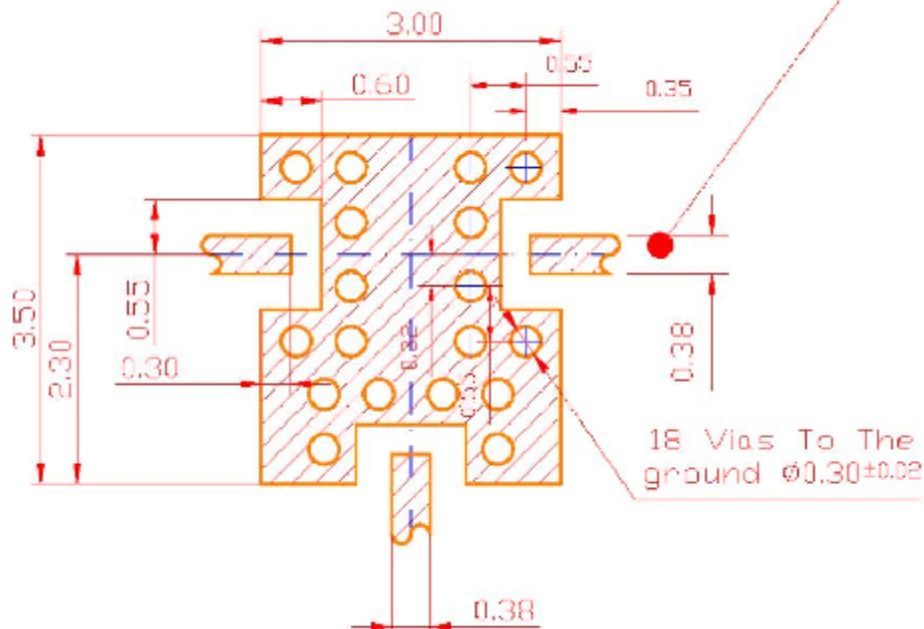
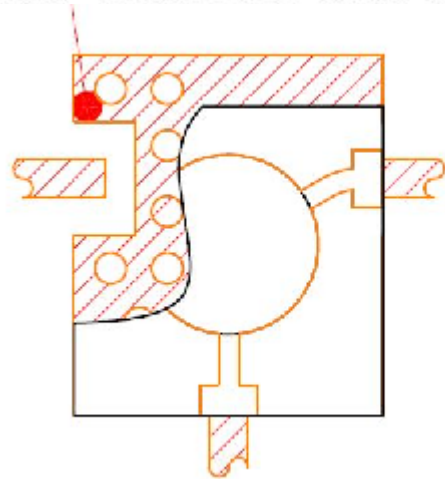


This document is the property of JQL Electronic Inc. It cannot be copied, duplicated, used for manufacturing purposes or communicated to third party as a whole or partly, without the written consent of JQL Electronic Inc.

JQL JQL Electronic Inc				
MATERIAL:		DWG NO:		
-		JCSM26K5T29K5A2		
SURFACE TREATMENT:		DWG BY:	Hu.Jiang	03.18.2019
-		CHK'D BY:		SCALE
DESCRIPTION:		APPV'D BY:		10:1
Surface Mount Circulator		Unit:	Tolerance:	The First:
		mm[inch]	Liner: ±0.25	
			Anguar: ±0.5°	A4

1		2		3		4		5		6	
Document No.	QR4-700-T-003	REV.	A/0	REV.	DESCRIPTION	REVISOR	DATE	APPROVED			
				0		Hu.Jiang	03.18.2019	HC.Qiu			

To ensure proper electrical and thermal performance there must be a ground plane with 100% solder connection underneath the part



Material: TACONIC TLY-5-005-CH-CH (Duroid 5880)
 .127±.025 THICK 1/2 OZ CU CLAD

Units: mm



This document is the property of JQL Electronic Inc. It cannot be copied, duplicated, used for manufacturing purposes or communicated to third party as a whole or partly, without the written consent of JQL Electronic Inc.

JQL JQL Electronic Inc				
MATERIAL: -		DWG NO: PCB For 2CMSM-28-4		
SURFACE TREATMENT: -		DWG BY:	Hu.Jiang	03.18.2019
		CHK'D BY:		SCALE
DESCRIPTION: Surface Mount Circulator		APPV'D BY:		1:0.1
		Unit:	Tolerance:	The First:
		mm[inch]	Liner: ±0.25 Anguar: ±0.5°	7
				A4