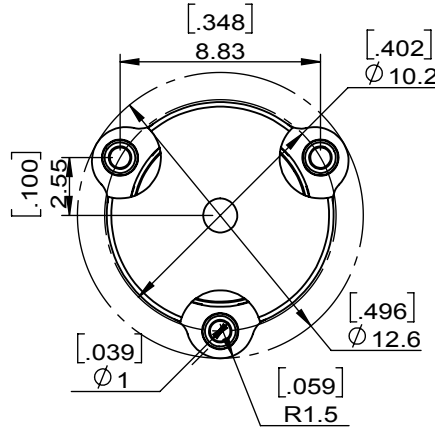
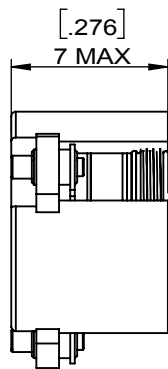
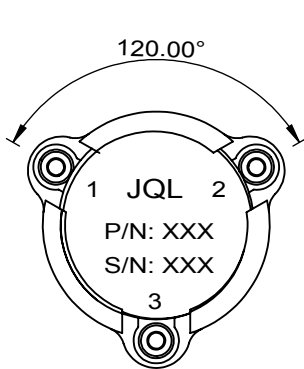
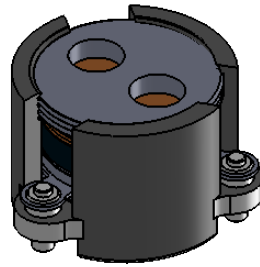
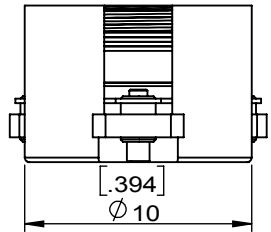
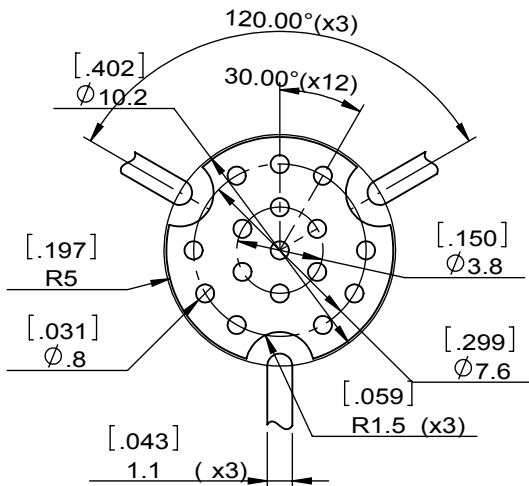


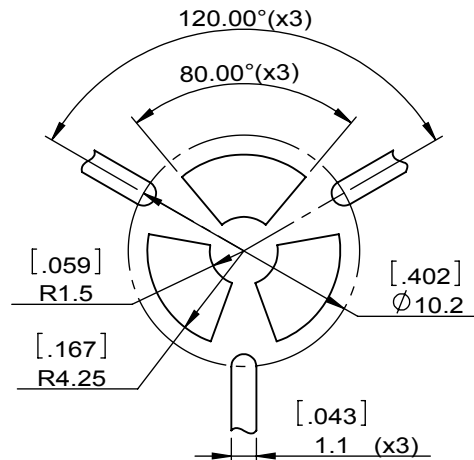
1		2		3		4		5		6	
Document No.	QR4-700-T-003	REV.	A/0	REV.	DESCRIPTION	REVISOR	DATE	APPROVED			
				0		Hu.Jiang	10.23.2020	HC.Qiu			



SPECIFICATIONS	
Part's Number	JCM3300T3800PT6R
Frequency(GHz)	3.300~3.800
Direction	CW
Insertion Loss(dB)MAX	0.3@+25°C 0.4@-40~+90°C
Isolation(dB)MIN	20.0@+25°C 18.0@-40~+90°C
Return Loss(dB)MIN	20.0@+25°C 18.0@-40~+90°C
3rd IMD(dBc)MAX	-60@2x37dBm-
Power FWD/REV/PK(Watt)	60/60/-
Operating Temperature(°C)	-40~+90
Storage Temperature(°C)	-55~+125
2nd/3rd Harmonic(dBc)	
Additional Notes	



Copper Pattern



Soldermask Pattern



This document is the property of JQL Technologies Corporation. It cannot be copied, duplicated, used for manufacturing purposes or communicated to third party as a whole or partly, without the written consent of JQL Technologies Corporation.

JQL JQL Technologies Corporation				
MATERIAL: STEEL		DWG NO: JCM3300T3800PT6R		
SURFACE TREATMENT: SILVER PLATING		DWG BY:	Hu.Jiang	10.23.2020
DESCRIPTION: SMT CIRCULATOR		CHK'D BY:		SCALE
		APPV'D BY:		3:1
Unit: mm[inch]		Tolerance: Liner: ±0.25 Anguar: ±0.5°	The First:	A4