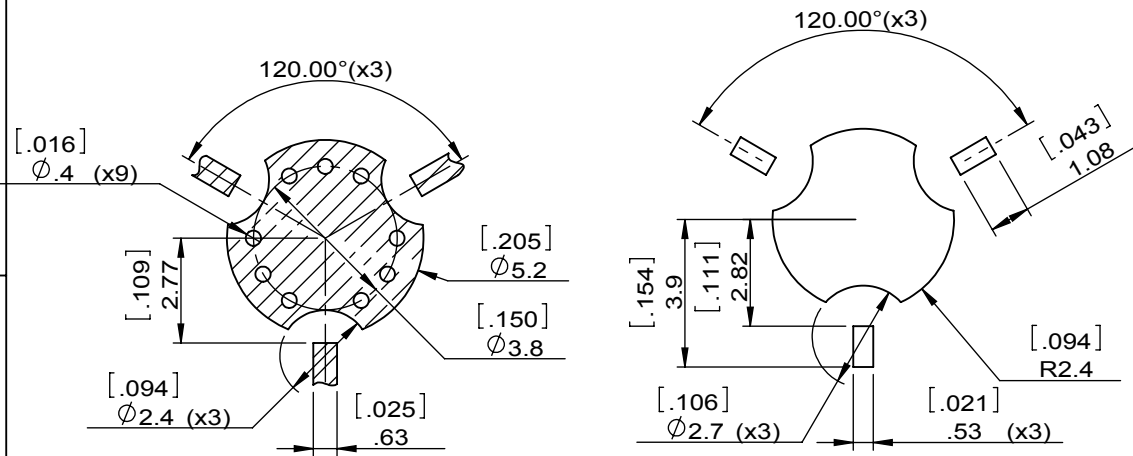
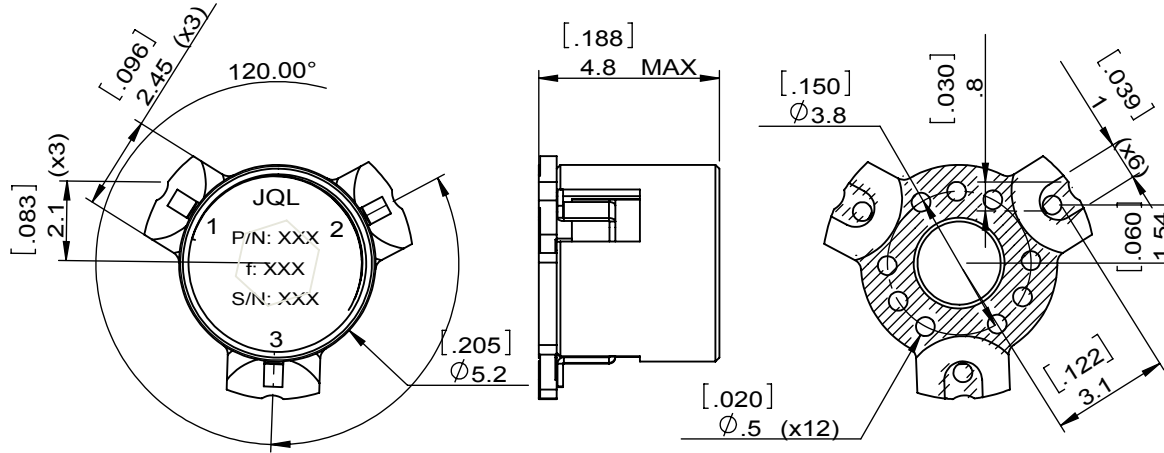
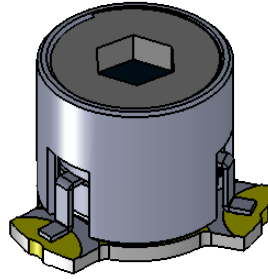
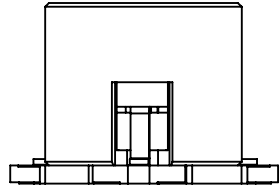


1	2
Document No.	QR4-700-T-003
REV.	A/0

4	5	6		
REV.	DESCRIPTION	REVISOR	DATE	APPROVED
0		Hu.Jiang	10.09.2019	HC.Qiu



Copper Pattern

Soldermask Pattern



This document is the property of JQL Electronic Inc. It cannot be copied, duplicated, used for manufacturing purposes or communicated to third party as a whole or partly, without the written consent of JQL Electronic Inc.

SPECIFICATIONS	
Part's Number	JCM9000T10K0XM12L
Frequency(GHz)	9.000~10.000
Direction	CW
Insertion Loss(dB)MAX	0.4
Isolation(dB)MIN	20.0
Return Loss(dB)MIN	19.0
3rd IMD(dBc)MAX	-
Power FWD/REV/PK(Watt)	-/-120 Duty Cycle 20%
Operating Temperature(°C)	-40~+85
Storage Temperature(°C)	-
2nd/3rd Harmonic(dBc)	-
Termination/Attenuator(Watt/dB)	-
Tab(W×LG×THK)(mm[Inch])	-
Additional Notes	-Phase matched:±5 degrees

JQL JQL Electronic Inc	
MATERIAL: STEEL	DWG NO: JCM9000T10K0XM12L
SURFACE TREATMENT: SILVER PLATING	DWG BY: Hu.Jiang 10.09.2019 SCALE
DESCRIPTION: SMT CIRCULATOR	CHK'D BY: APPV'D BY: 5:1
Unit: mm[inch]	Tolerance: Liner: ±0.25 Anguar: ±0.5°
	The First:
	A4