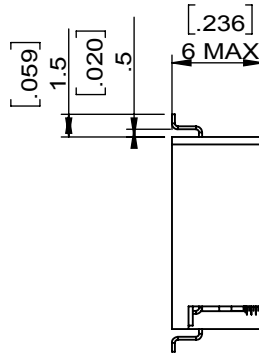
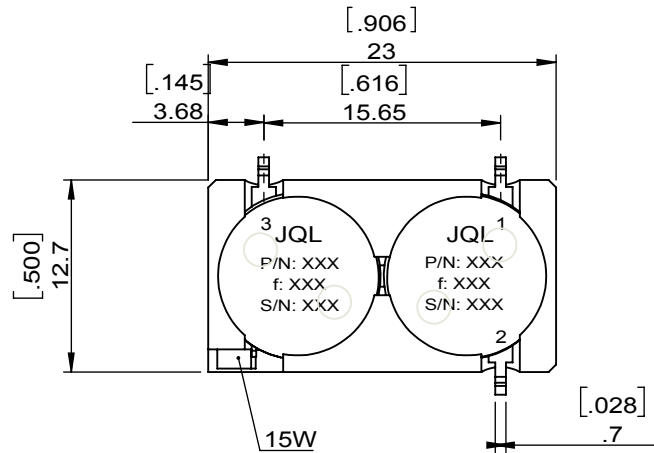
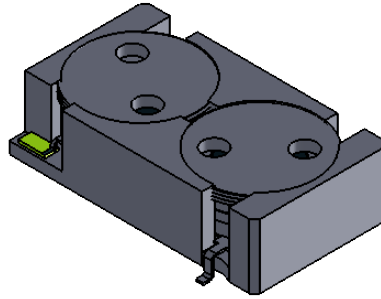


1		2		3		4		5		6			
Document No.	QR4-700-T-003	REV.	A/0	REV.	0	DESCRIPTION		REVISOR	Hu.Jiang	DATE	12.23.2019	APPROVED	HC.Qiu



SPECIFICATIONS	
Part's Number	JC2M4900T6100VM1
Frequency(GHz)	4.900~6.100
Direction	CW
Insertion loss port 1 to port 2, IL1-2 (dB)MAX	0.4@5.2~5.8GHz 0.6@4.9~5.2&5.8~6.1GHz 6.0 MIN@10~12GHz
Insertion loss port 2 to port 3, IL2-3(dB)MAX	0.8@5.2~5.8GHz 1.2@4.9~5.2&5.8~6.1GHz 12.0 MIN@10~12GHz
Isolation port 2 to 1, IS2-1(dB)MIN	20.0@5.2~5.8GHz 18.0@4.9~5.2&5.8~6.1GHz
Isolation port 1 to 3, IS1-3(dB)MIN	20.0@5.2~5.8GHz 18.0@4.9~5.2&5.8~6.1GHz
Isolation port 3 to 1, IS3-1(dB)MIN	20.0@5.2~5.8GHz 18.0@4.9~5.2&5.8~6.1GHz
Isolation port 3 to 2, IS3-2(dB)MIN	35.0@5.2~5.8GHz 28.0@4.9~5.2&5.8~6.1GHz
Return Loss(dB)MIN	21.0@5.2~5.8GHz 19.0@4.9~5.2&5.8~6.1GHz
3rd IMD(dBc)MAX	-
Power FWD/REV/PK(Watt)	25/10/60 PW=150us, DC=15%
Operating Temperature(°C)	0~+70
Storage Temperature(°C)	-40~+85
2nd/3rd Harmonic(dBc)	-
Termination/Attenuator(Watt/dB)	
Tab(W×LG×THK)(mm[Inch])	-
Additional Notes	-

JQL JQL Electronic Inc				
MATERIAL: STEEL		DWG NO: JC2M4900T6100VM1		
SURFACE TREATMENT: SILVER PLATING		DWG BY:	Hu.Jiang	12.23.2019
DESCRIPTION: SMT CIRCULATOR		CHK'D BY:		SCALE
		APPV'D BY:		2:1
		Unit: mm[inch]	Tolerance: Liner: ±0.25 Anguar: ±0.5°	The First:
				A4



This document is the property of JQL Electronic Inc. It cannot be copied, duplicated, used for manufacturing purposes or communicated to third party as a whole or partly, without the written consent of JQL Electronic Inc.