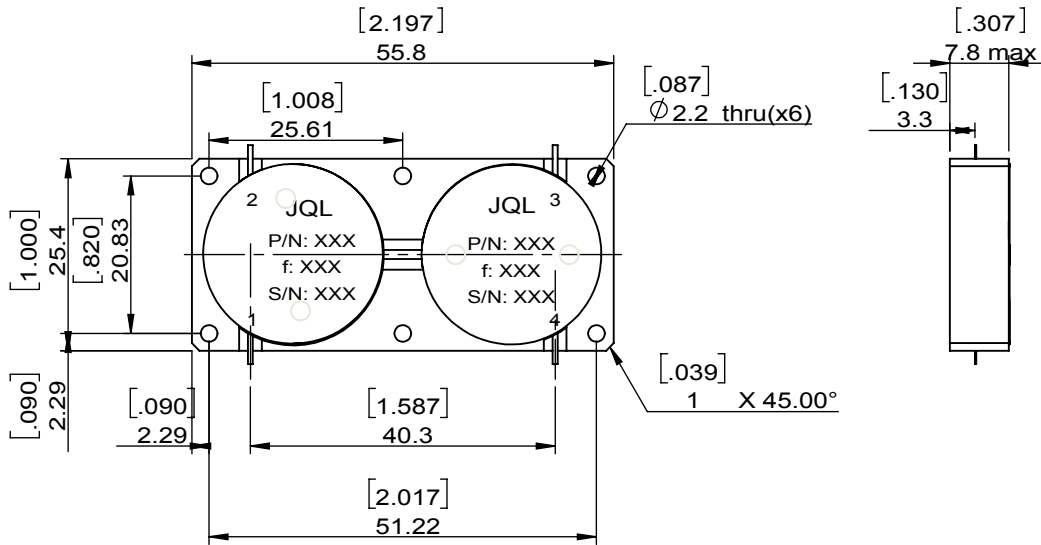
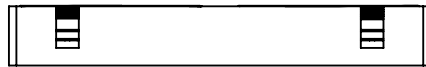
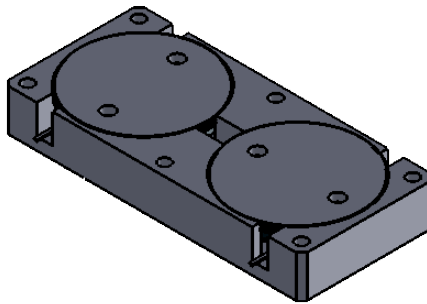


1		2		3		4		5		6	
Document No.		QR4-700-T-003		REV.		DESCRIPTION		REVISOR		DATE	
REV.		A/0		0				Hu.Jiang		12.16.2019	
										APPROVED	
										HC.Qiu	




JQL Electronic Inc				
MATERIAL: STEEL		DWG NO: JC2D1200T1400M10		
SURFACE TREATMENT: NICKEL PLATING		DWG BY:	Hu.Jiang	12.16.2019
DESCRIPTION: Dual Junction Circulator		CHK'D BY:		SCALE
		APPV'D BY:		1:1
		Unit:	Tolerance:	The First:
		mm[inch]	Liner: ± 0.25	
			Anguar: $\pm 0.5^\circ$	A4



This document is the property of JQL Electronic Inc. It cannot be copied, duplicated, used for manufacturing purposes or communicated to third party as a whole or partly, without the written consent of JQL Electronic Inc.

1		2		3		4		5		6	
Document No.	QR4-700-T-003	REV.	DESCRIPTION	REVISOR	DATE	APPROVED					
REV.	A/0	0		Hu.Jiang	12.16.2019	HC.Qiu					

SPECIFICATIONS	
Part's Number	JC2D1200T1400M10
Frequency(GHz)	1.200~1.400
Direction	CW
Insertion loss port 1 to port 2, IL1-2 (dB)MAX	0.35
Insertion loss port 3 to port 4, IL3-4 (dB)MAX	0.35
Insertion loss port 2 to port 3, IL2-3 (dB)MAX	0.7
Insertion loss port 4 to port 1, IL4-1 (dB)MAX	0.7
Isolation port 2 to 1 with port 3 and 4 terminated in a matched load, IS2-1 (dB)MIN	20.0
Isolation port 2 to 4 with port 1 and 3 terminated in a matched load, IS2-4 (dB)MIN	20.0
Isolation port 1 to 3 with port 2 and 4 terminated in a matched load, IS1-3 (dB)MIN	20.0
Isolation port 3 to 1 with port 2 and 4 terminated in a matched load, IS3-1 (dB)MIN	20.0
Isolation port 3 to 2 with port 1 and 4 terminated in a matched load, IS3-2 (dB)MIN	35.0
Isolation port 1 to 4 with port 2 and 3 terminated in a matched load, IS1-4 (dB)MIN	35.0
Isolation port 4 to 2 with port 1 and 3 terminated in a matched load, IS4-2 (dB)MIN	20.0
Isolation port 4 to 3 with port 1 and 2 terminated in a matched load, IS4-3 (dB)MIN	20.0
Return Loss (ports 1, 2, 3 and 4), (dB)MIN	20.0
3rd IMD(dBc)MAX	
Power FWD/REV/PK(Watt)	100/100/500 Duty cycle = 20%, Pulse Width = 330 μ s
Operating Temperature($^{\circ}$ C)	0~+70
Storage Temperature($^{\circ}$ C)	-40~+85
2nd/3rd Harmonic(dBc)	-
Termination/Attenuator(Watt/dB)	-
Tab(W \times LG \times THK)(mm[Inch])	0.635[.025] \times 1.78[.07] \times 0.2[.008]
Additional Notes	-

JQL JQL Electronic Inc				
MATERIAL: STEEL		DWG NO: JC2D1200T1400M10		
SURFACE TREATMENT: NICKEL PLATING		DWG BY:	Hu.Jiang	12.16.2019
DESCRIPTION: Dual Junction Circulator		CHK'D BY:		SCALE
		APPV'D BY:		1:1
		Unit: mm[inch]	Tolerance: Liner: \pm 0.25 Anguar: \pm 0.5 $^{\circ}$	The First: 
				A4



This document is the property of JQL Electronic Inc. It cannot be copied, duplicated, used for manufacturing purposes or communicated to third party as a whole or partly, without the written consent of JQL Electronic Inc.