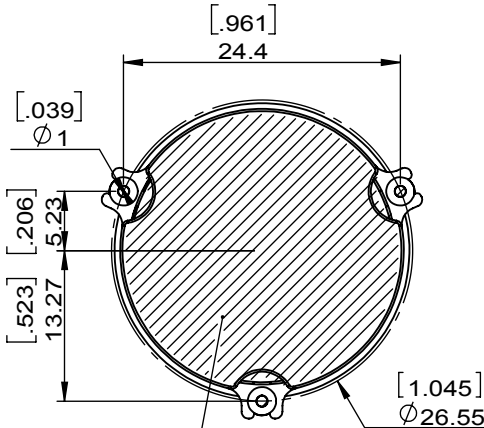
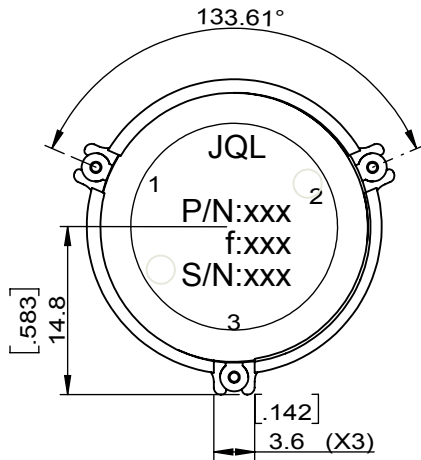
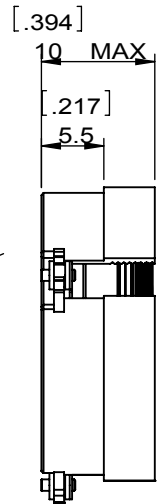
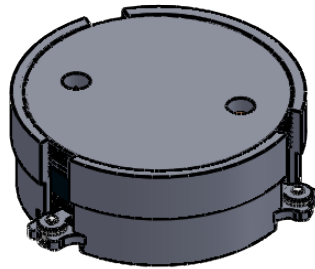
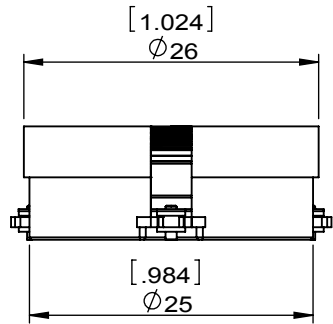


| | | | | | | | | | | | | | |
|--------------|---------------|------|-----|------|---|-------------|--|---------|----------|------|------------|----------|--------|
| 1 | | 2 | | 3 | | 4 | | 5 | | 6 | | | |
| Document No. | QR4-700-T-003 | REV. | A/0 | REV. | 0 | DESCRIPTION | | REVISOR | Hu.Jiang | DATE | 02.05.2020 | APPROVED | HC.Qiu |



| SPECIFICATIONS | |
|---------------------------------|--|
| Part's Number | JCM1200T1610PN1 |
| Frequency(GHz) | 1.200~1.610 |
| Direction | |
| Insertion Loss(dB)MAX | 0.45@+25°C 0.5@-40~+110°C |
| Isolation(dB)MIN | 18.0@+25°C 16.0@-40~+110°C |
| Return Loss(dB)MIN | 18.0@+25°C 16.0@-40~+110°C |
| 3rd IMD(dBc)MAX | - |
| Power FWD/REV/PK(Watt) | 7/7/50 duty cycle 12% for pulse with 150usec |
| Operating Temperature(°C) | -40~+110 |
| Storage Temperature(°C) | |
| 2nd/3rd Harmonic(dBc) | - |
| Termination/Attenuator(Watt/dB) | |
| Tab(W×LG×THK)(mm[Inch]) | |
| Additional Notes | - |

JQL JQL Electronic Inc

MATERIAL:
STEEL

DWG NO:
JCM1200T1610PN1

SURFACE TREATMENT:
NICKLE PLATING

| | | | |
|---------|----------|------------|-------|
| DWG BY: | Hu.Jiang | 02.05.2020 | SCALE |
|---------|----------|------------|-------|

DESCRIPTION:
SMT CIRCULATOR

| | | | |
|-------------------|---|------------|-----|
| CHK'D BY: | | | 3:2 |
| APP'V'D BY: | | | |
| Unit: mm[inch] | Tolerance: Liner: ±0.25 Anguar: ±0.5° | The First: | A4 |



This document is the property of JQL Electronic Inc. It cannot be copied, duplicated, used for manufacturing purposes or communicated to third party as a whole or partly, without the written consent of JQL Electronic Inc.

WEIGHT: