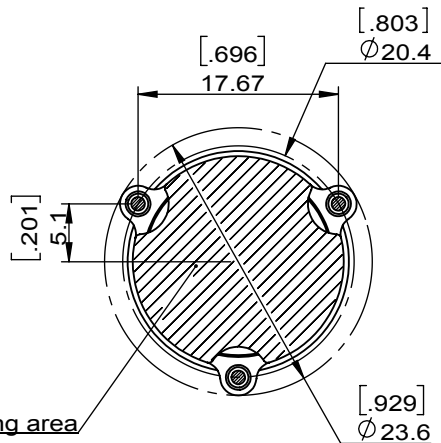
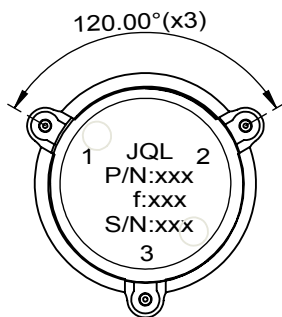
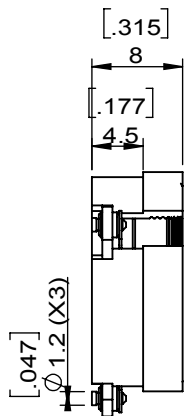
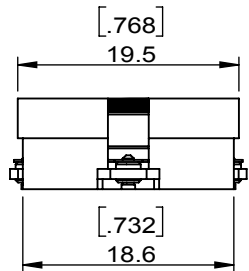
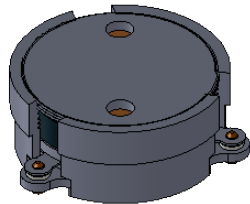
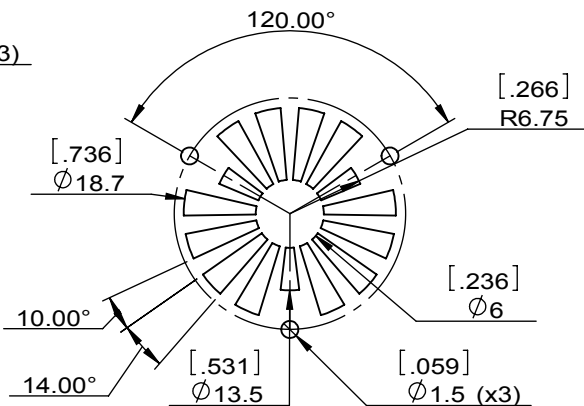
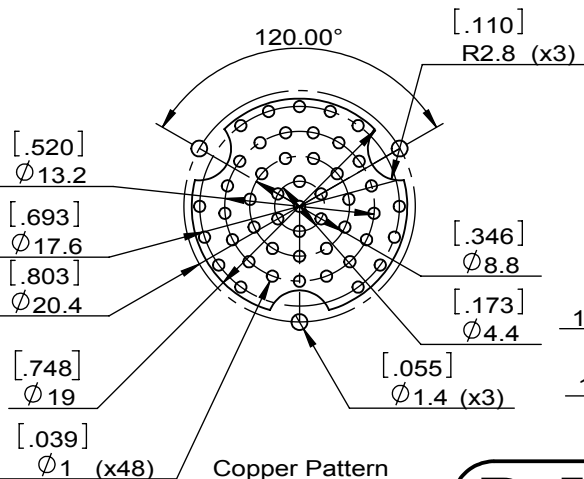


1		2		3		4		5		6	
Document No.	QR4-700-T-003					REV.	DESCRIPTION	REVISOR	DATE	APPROVED	
REV.	A/0					0		Hu.Jiang	02.12.2020	HC.Qiu	



SPECIFICATIONS	
Part's Number	JCM1250T1450PL5R
Frequency(GHz)	1.250~1.450
Direction	CW
Insertion Loss(dB)MAX	0.45@+25°C 0.5@-40~+110°C
Isolation(dB)MIN	20.0@+25°C 18.0@-40~+110°C
Return Loss(dB)MIN	20.0@+25°C 18.0@-40~+110°C
3rd IMD(dBc)MAX	
Power FWD/REV/PK(Watt)	50/50/500 duty cycle 12% for pulse with 150usec
Operating Temperature(°C)	-40~+110
Storage Temperature(°C)	
2nd/3rd Harmonic(dBc)	
Termination/Attenuator(Watt/dB)	
Tab(W×LG×THK)(mm[Inch])	
Additional Notes	



This document is the property of JQL Electronic Inc. It cannot be copied, duplicated, used for manufacturing purposes or communicated to third party as a whole or partly, without the written consent of JQL Electronic Inc.

<b>JQL Electronic Inc</b>				
<b>MATERIAL:</b> STEEL		<b>DWG NO:</b> JCM1250T1450PL5R		
<b>SURFACE TREATMENT:</b> SILVER PLATING		DWG BY:	Hu.Jiang	02.12.2020
<b>DESCRIPTION:</b> SMT CIRCULATOR		CHK'D BY:		SCALE
		APPV'D BY:		3:2
		Unit: mm[inch]	Tolerance: Liner: ±0.25 Anguar: ±0.5°	The First: A4