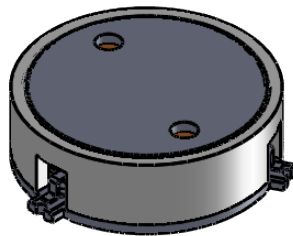
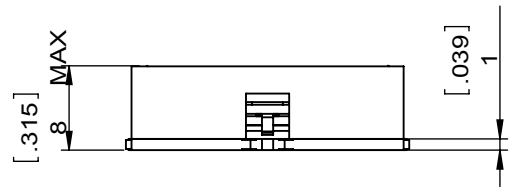
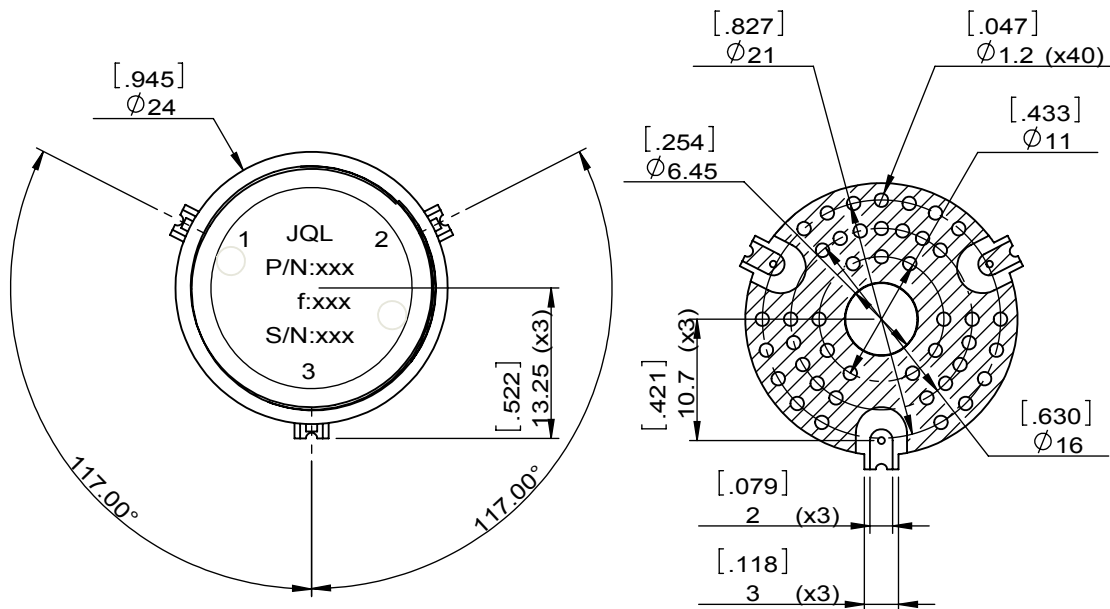


1		2		3		4		5		6	
Document No.	QR4-700-T-003	REV.	A/0	REV.	DESCRIPTION	REVISOR	DATE	APPROVED			
				0		Hu.Jiang	02.05.2020	HC.Qiu			



SPECIFICATIONS	
Part's Number	JCM1250T1450S5R
Frequency(GHz)	1.250~1.450
Direction	CW
Insertion Loss(dB)MAX	0.4@+25°C 0.45@-40~+110°C
Isolation(dB)MIN	20.0@+25°C 18.0@-40~+110°C
Return Loss(dB)MIN	20.0@+25°C 18.0@-40~+110°C
3rd IMD(dBc)MAX	-
Power FWD/REV/PK(Watt)	50/50/500 duty cycle 12% for pulse with 150usec
Operating Temperature(°C)	-40~+110
Storage Temperature(°C)	-
2nd/3rd Harmonic(dBc)	-
Termination/Attenuator(Watt/dB)	-
Tab(W×LG×THK)(mm[Inch])	-
Additional Notes	-



This document is the property of JQL Electronic Inc. It cannot be copied, duplicated, used for manufacturing purposes or communicated to third party as a whole or partly, without the written consent of JQL Electronic Inc.

JQL JQL Electronic Inc				
MATERIAL: STEEL		DWG NO: JCM1250T1450S5R		
SURFACE TREATMENT: NICKEL PLATED		DWG BY:	Hu.Jiang	02.05.2020
DESCRIPTION: SMT CIRCULATOR		CHK'D BY:		SCALE
		APPV'D BY:		3:2
		Unit: mm[inch]	Tolerance: Liner: ±0.25 Anguar: ±0.5°	The First: A4