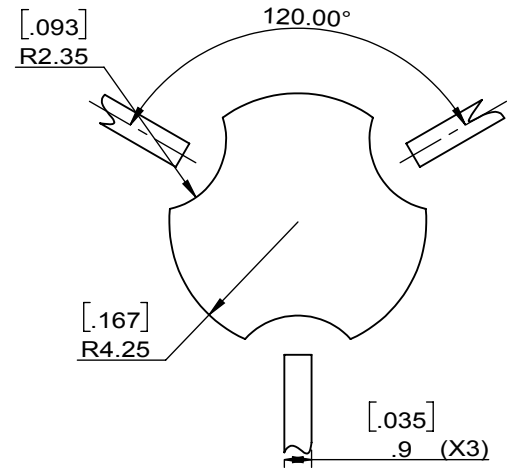
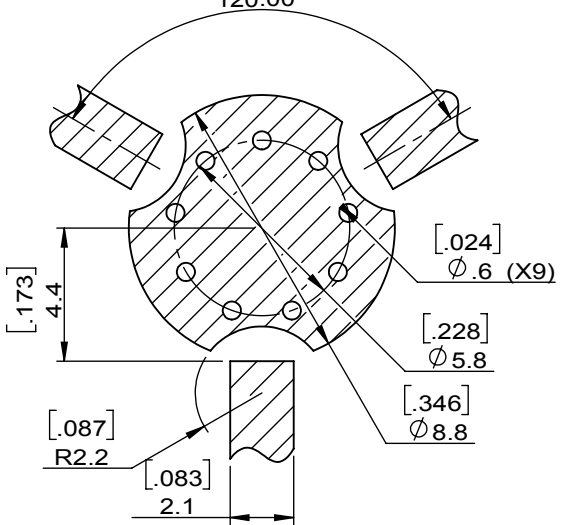
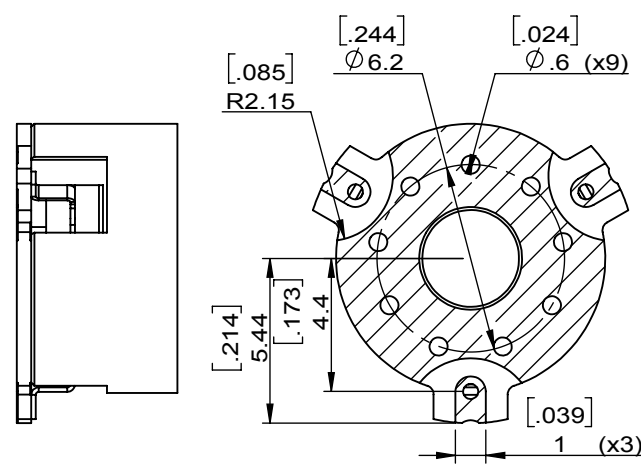
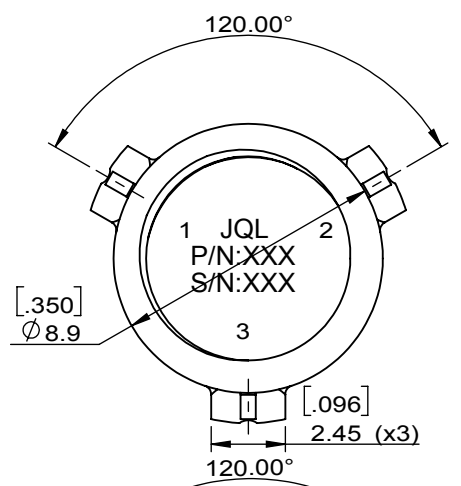
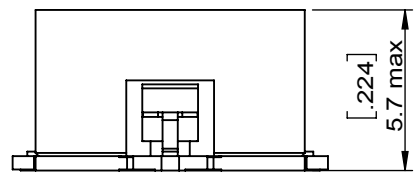
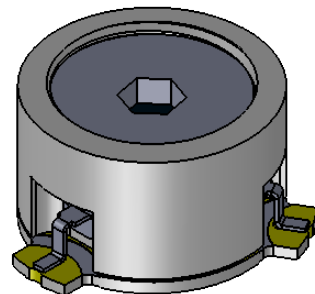


1		2		3		4		5		6	
Document No.	QR4-700-T-003	REV.	A/0	REV.	DESCRIPTION	REVISOR	DATE	APPROVED			
				0		Hu.Jiang	05.22.2020	HC.Qiu			



SPECIFICATIONS	
Part's Number	JCM8000T11K0ZM6R
Frequency(GHz)	8.000~11.000
Direction	CW
Insertion Loss(dB)MAX	0.7
Isolation(dB)MIN	16.0
Return Loss(dB)MIN	16.0
3rd IMD(dBc)MAX	-
Power FWD/REV/PK(Watt)	-/-60 DC = 30% max
Operating Temperature(°C)	-20~+70
Storage Temperature(°C)	-
2nd/3rd Harmonic(dBc)	-
Termination/Attenuator(Watt/dB)	-
Additional Notes	

JQL JQL Electronic Inc				
MATERIAL: STEEL		DWG NO: JCM8000T11K0ZM6R		
SURFACE TREATMENT: SILVER PLATING		DWG BY:	Hu.Jiang	05.22.2020
DESCRIPTION: SMT CIRCULATOR		CHK'D BY:		SCALE
		APPV'D BY:		4:1
		Unit: mm[inch]	Tolerance: Liner: ±0.1 Anguar: ±0.5°	The First:
				A4



This document is the property of JQL Electronic Inc. It cannot be copied, duplicated, used for manufacturing purposes or communicated to third party as a whole or partly, without the written consent of JQL Electronic Inc.