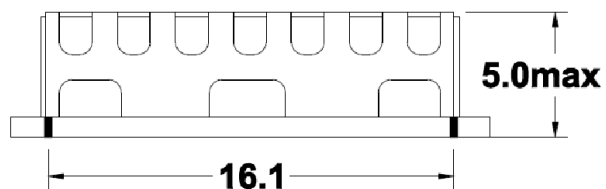
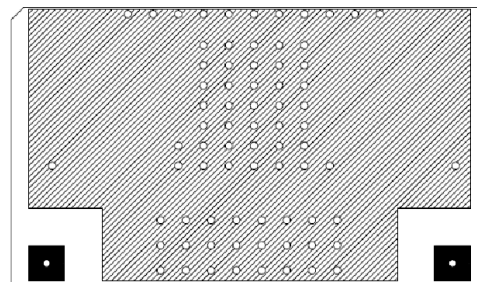
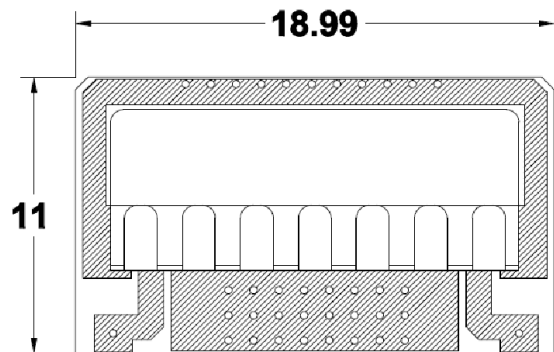


1		2		3		4		5		6	
Document No.	QR4-700-T-003					REV.	DESCRIPTION	REVISOR	DATE	APPROVED	
REV.	A/0					0		YL.Chen	06.05.2020	HC.Qiu	



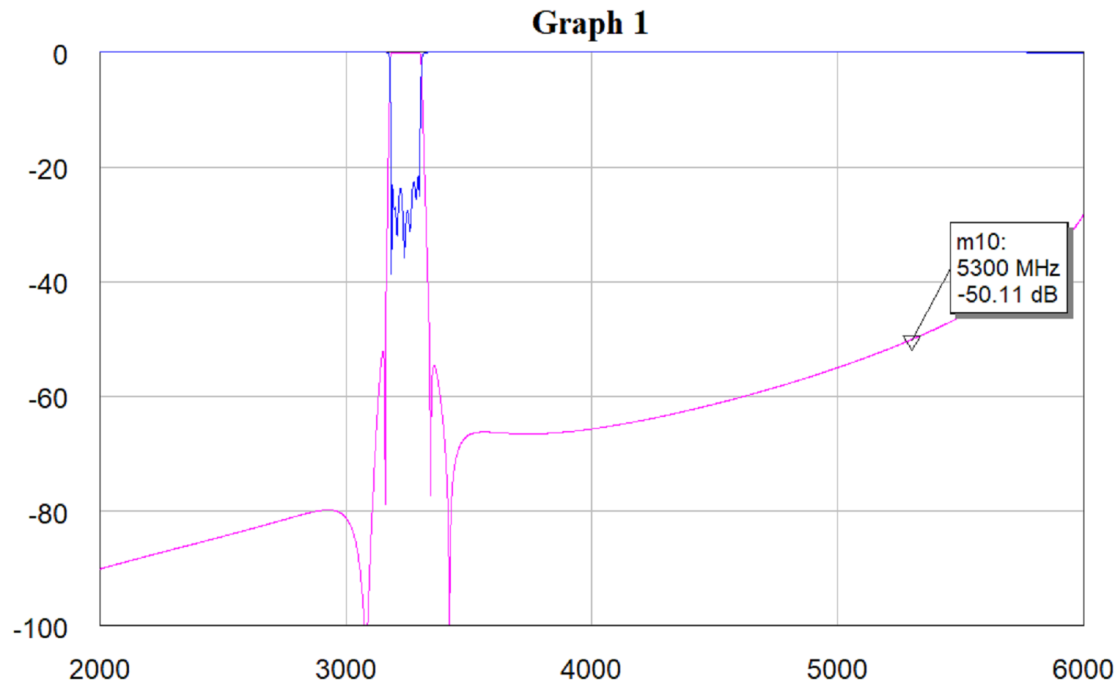
I/O PORT  
 GROUND  
 TOLERANCE :  $\pm 0.20$   
 UNIT : mm



This document is the property of JQL Electronic Inc. It cannot be copied, duplicated, used for manufacturing purposes or communicated to third party as a whole or partly, without the written consent of JQL Electronic Inc.

<b>JQL</b> JQL Electronic Inc				
<b>MATERIAL:</b> 47R Er: 19.5 Ceramic		<b>DWG NO:</b> JRP3100T3200		
<b>SURFACE TREATMENT:</b>		DWG BY:	YL.Chen	06.05.2020
<b>DESCRIPTION:</b> Band Pass Filter		CHK'D BY:		
		APPV'D BY:		
Unit: mm[inch]	Tolerance: Liner: $\pm 0.2$ Anguar: $\pm 0.5^\circ$	The First:		2 : 1
				A4

1		2		3		4		5		6	
Document No.	QR4-700-T-003	REV.	A/0	REV.	DESCRIPTION	REVISOR	DATE	APPROVED			
				0		YL.Chen	06.05.2020	HC.Qiu			



ITEMS	SPECIFICATIONS
Center Frequency(MHz)	3150
Pass Bandwidth(MHz)	3100 ~ 3200
Insertion Loss in BW(dB)	5.0 Max
Return Loss(dB)	15.0 Min
Attenuation(dB)	50.0 Min @ DC ~ 3060MHz 50.0 Min @ 3240~ 4800MHz
Power( W)	2.0 Max
Impedance( $\Omega$ )	50
Temperature ( $^{\circ}$ C)	-40 ~ +105
Additional Notes	

<b>JQL JQL Electronic Inc</b>				
<b>MATERIAL:</b> 47R Er: 19.5 Ceramic		<b>DWG NO:</b> JRP3100T3200		
<b>SURFACE TREATMENT:</b>		DWG BY:	YL.Chen	06.05.2020
<b>DESCRIPTION:</b> Band Pass Filter		CHK'D BY:		SCALE
		APPV'D BY:		1 : 1
		Unit: mm[inch]	Tolerance: Liner: $\pm 0.2$ Anguar: $\pm 0.5^{\circ}$	The First: 
				A4



This document is the property of JQL Electronic Inc. It cannot be copied, duplicated, used for manufacturing purposes or communicated to third party as a whole or partly, without the written consent of JQL Electronic Inc.