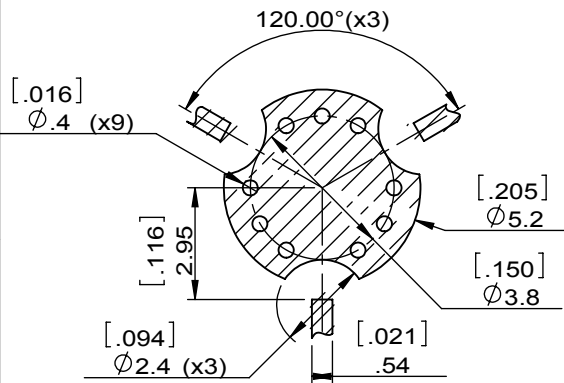
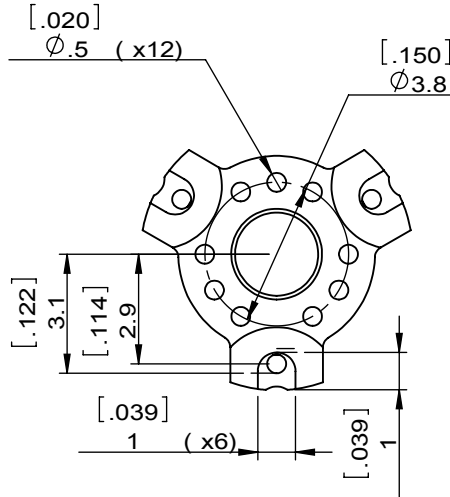
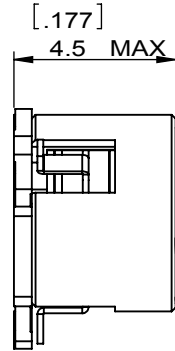
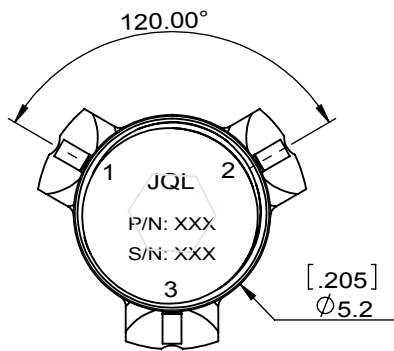
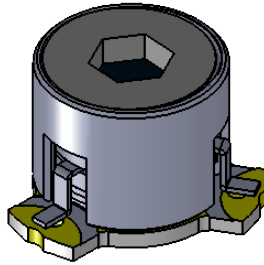
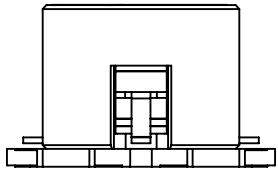
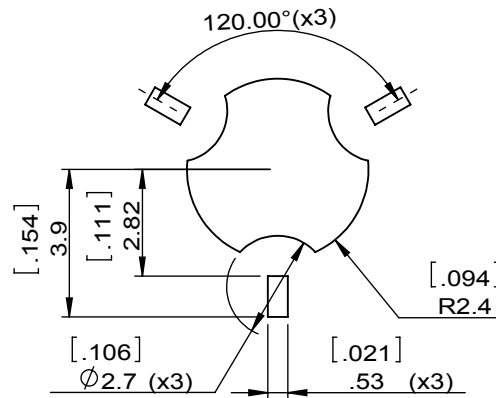


1		2		3		4		5		6	
Document No.	QR4-700-T-003	REV.	A/0	REV.	DESCRIPTION	REVISOR	DATE	APPROVED			
				0		Hu.Jiang	01.08.2021	HC.Qiu			



Copper Pattern



Soldermask Pattern

SPECIFICATIONS	
Part's Number	JCM23K0T25K0XM1
Frequency(GHz)	23.0~25.0
Direction	CW
Insertion Loss(dB)MAX	0.9
Isolation(dB)MIN	16.5
Return Loss(dB)MIN	16.5
3rd IMD(dBc)MAX	-
Power FWD/REV/PK(Watt)	2/2/10
Operating Temperature(°C)	0~+60
Storage Temperature(°C)	-
2nd/3rd Harmonic(dBc)	-
Termination/Attenuator(Watt/dB)	-
Tab(W×LG×THK)(mm[Inch])	-
Additional Notes	

JQL JQL Technologies Corporation				
MATERIAL: STEEL		DWG NO: JCM23K0T25K0XM1		
SURFACE TREATMENT: SILVER PLATING		DWG BY:	Hu.Jiang	01.08.2021
DESCRIPTION: SMT CIRCULATOR		CHK'D BY:		SCALE
		APPV'D BY:		5:1
		Unit: mm[inch]	Tolerance: Liner: ±0.25 Anguar: ±0.5°	The First:
				A4



This document is the property of JQL Technologies Corporation. It cannot be copied, duplicated, used for manufacturing purposes or communicated to third party as a whole or partly, without the written consent of JQL Technologies Corporation.

WEIGHT: