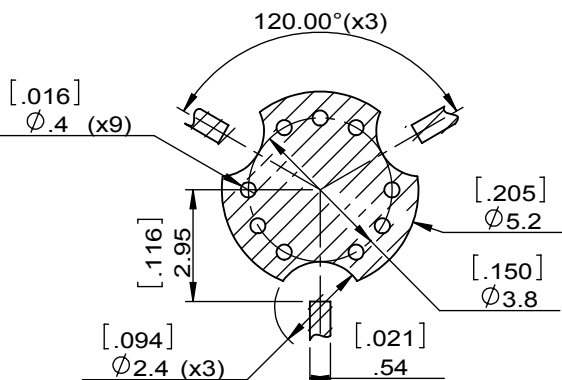
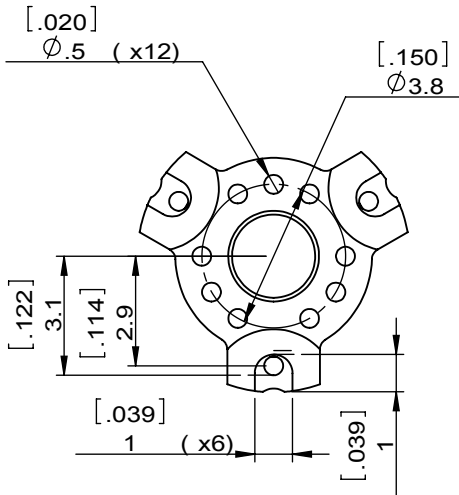
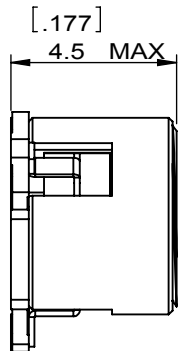
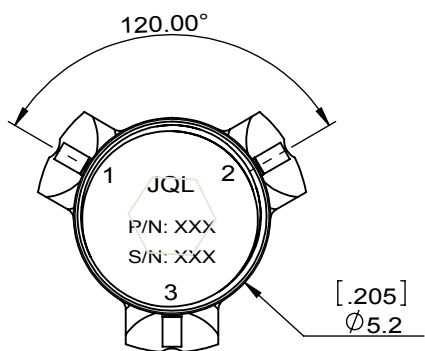
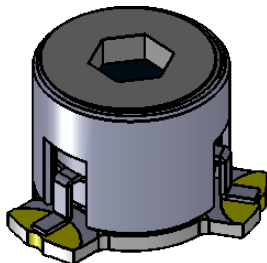
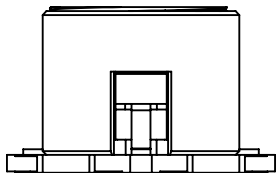
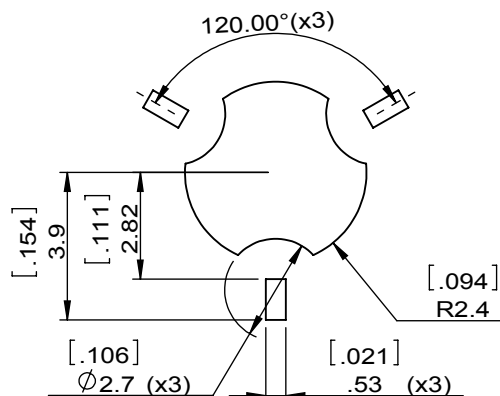


1		2		3		4		5		6	
Document No.	QR4-700-T-003	REV.	A/0	REV.	DESCRIPTION	REVISOR	DATE	APPROVED			
				0		X.S	06.25.2021	HC.Qiu			



Copper Pattern



Soldermask Pattern

SPECIFICATIONS	
Part's Number	JCM13K5T14K5XM1
Frequency(GHz)	13.500~14.500
Direction	CW
Insertion Loss(dB)MAX	0.5 @ 25°C 0.6 @ 100°C
Isolation(dB)MIN	20.0 @ 25°C 17.0 @ 100°C
Return Loss(dB)MIN	20.0 @ 25°C 17.0 @ 100°C
3rd IMD(dBc)MAX	-
Power FWD/REV/PK(Watt)	1.5/1.5/8
Operating Temperature(°C)	-20~+100
Storage Temperature(°C)	-40~+125
2nd/3rd Harmonic(dBc)	-
Termination/Attenuator(Watt/dB)	-
Tab(W×LG×THK)(mm[Inch])	-
Additional Notes	-

JQL JQL Technologies Corporation				
MATERIAL: STEEL		DWG NO: JCM13K5T14K5XM1		
SURFACE TREATMENT: SILVER PLATING		DWG BY:	X.S	06.25.2021
DESCRIPTION: SMT CIRCULATOR		CHK'D BY:		SCALE
		APPV'D BY:		5:1
Unit: mm[inch]		Tolerance: Liner: ±0.25 Anguar: ±0.5°	The First:	A4



This document is the property of JQL Technologies Corporation. It cannot be copied, duplicated, used for manufacturing purposes or communicated to third party as a whole or partly, without the written consent of JQL Technologies Corporation.