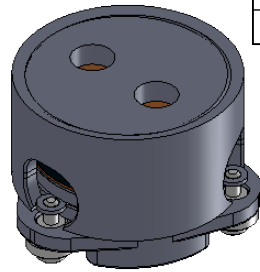
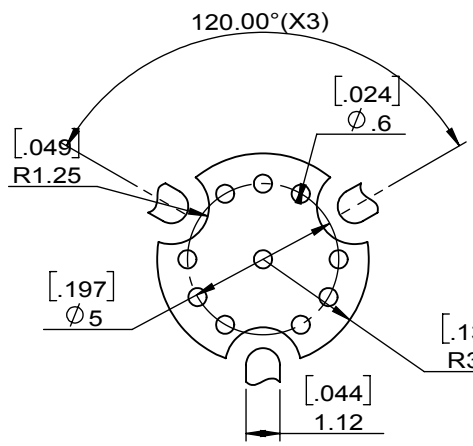
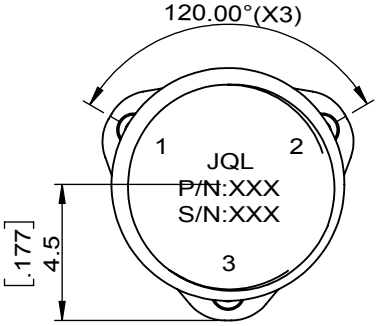
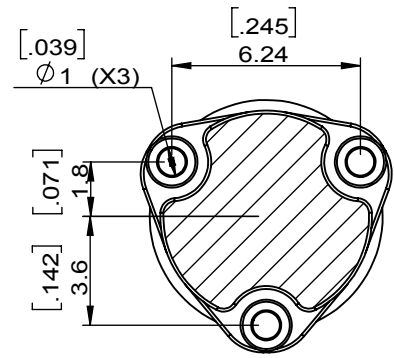
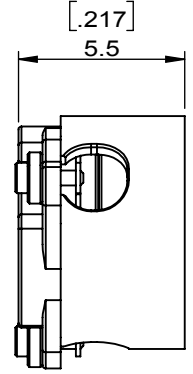
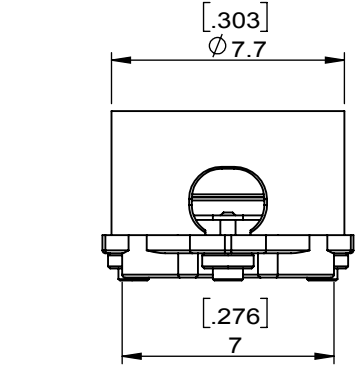


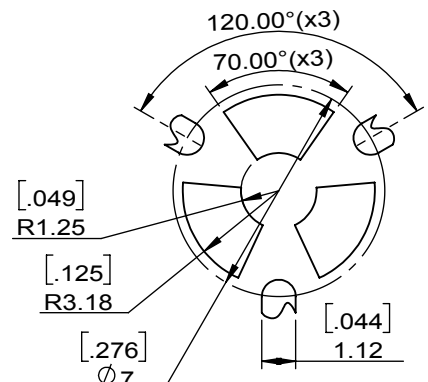
1		2		3		4		5		6	
Document No.	QR4-700-T-003	REV.	A/0	REV.	DESCRIPTION	REVISOR	DATE	APPROVED			
				0		X.S	06.02.2021	HC.Qiu			



SPECIFICATIONS	
Part's Number	JCM5250T5550LM2R
Frequency(GHz)	5.250~5.550
Direction	CW
Insertion Loss(dB)MAX	0.4 0.35 /Typ
Isolation(dB)MIN	20.0 22.0 / Typ
Return Loss(dB)MIN	20.0 22.0 / Typ
3rd IMD(dBc)MAX	
Power FWD/REV/PK(Watt)	30/30/50
Operating Temperature(°C)	-40 ~ +85
Storage Temperature(°C)	-40 ~ +105
Harmonic product generation	
Phase flatness vs. frequency	
2nd/3rd Harmonic Rejection(dB)MIN	
Additional Notes	-



Copper Pattern



Soldermask Pattern



This document is the property of JQL Technologies Corporation. It cannot be copied, duplicated, used for manufacturing purposes or communicated to third party as a whole or partly, without the written consent of JQL Technologies Corporation.

JQL JQL Technologies Corporation				
MATERIAL: STEEL		DWG NO: JCM5250T5550LM2R		
SURFACE TREATMENT: SILVER PLATING		DWG BY:	X.S	06.02.2021
DESCRIPTION: SMT CIRCULATOR		CHK'D BY:		SCALE
		APPV'D BY:		4:1
Unit: mm[inch]		Tolerance: Liner: ±0.25 Anguar: ±0.5°	The First:	A4