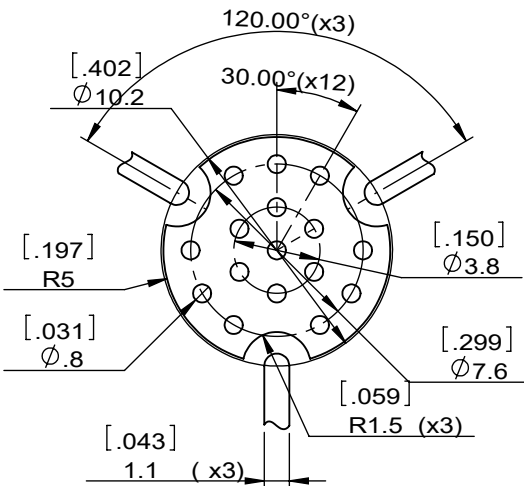
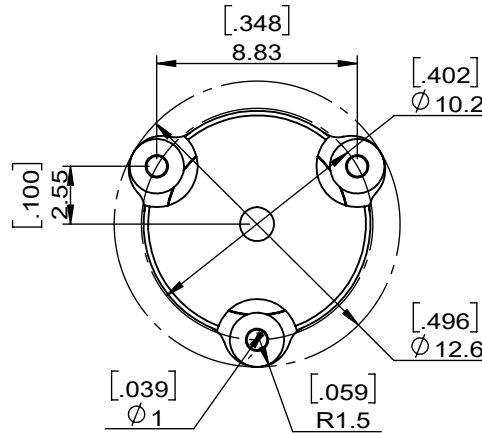
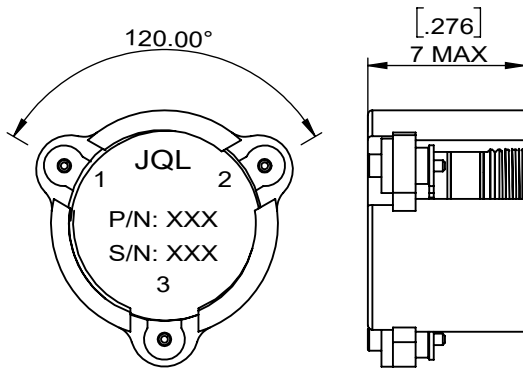
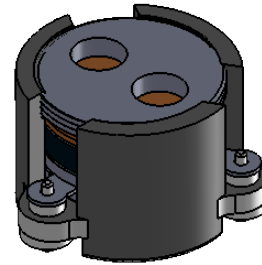
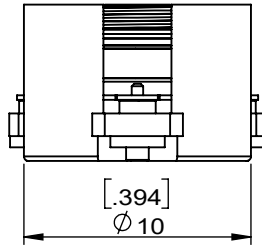
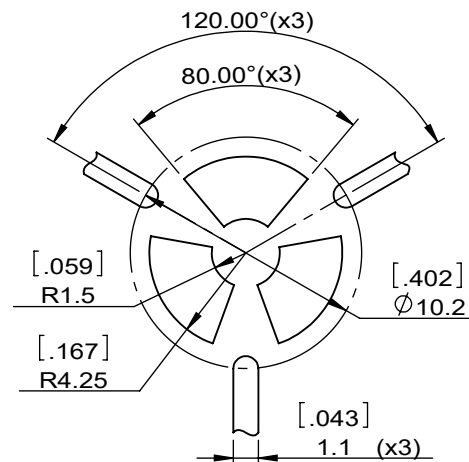


1	2
Document No.	QR4-700-T-003
REV.	A/0

4	5	6		
REV.	DESCRIPTION	REVISOR	DATE	APPROVED
SK0		J.Z	04.01.2022	HC.Qiu



Copper Pattern



Soldermask Pattern

SPECIFICATIONS	
Part's Number	JCM3400T4000PT2R
Frequency(GHz)	3.400~4.000
Direction	CW
Insertion Loss(dB)MAX	0.35@+25°C 0.40@-40~+85°C
Isolation(dB)MIN	20.0@+25°C 18.0@-40~+85°C
Return Loss(dB)MIN	20.0@+25°C 18.0@-40~+85°C
3rd IMD(dBc)MAX	-
Power FWD/REV/PK(Watt)	20/20/100
Operating Temperature(°C)	-40~+85
Storage Temperature(°C)	-
2nd/3rd Harmonic(dBc)	-
Termination/Attenuator(Watt/dB)	-
Tab(W×LG×THK)(mm[Inch])	-
Additional Notes	-

<b>JQL</b> JQL Technologies Corporation				
<b>MATERIAL:</b> STEEL		<b>DWG NO:</b> JCM3400T4000PT2R		
<b>SURFACE TREATMENT:</b> SILVER PLATING		DWG BY:	J.Z	04.01.2022
<b>DESCRIPTION:</b> SMT CIRCULATOR		CHK'D BY:		SCALE
		APPV'D BY:		3:1
Unit: mm[inch]		Tolerance: Liner: ±0.25 Anguar: ±0.5°	The First:	A4



This document is the property of JQL Technologies Corporation. It cannot be copied, duplicated, used for manufacturing purposes or communicated to third party as a whole or partly, without the written consent of JQL Technologies Corporation.