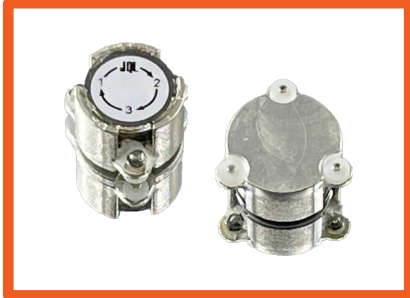


C Band Surface Mount Circulator

JCM5200T5900LM24P

Description:

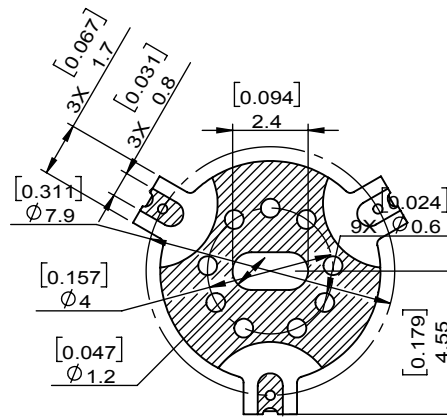
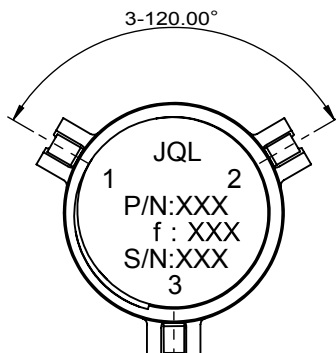
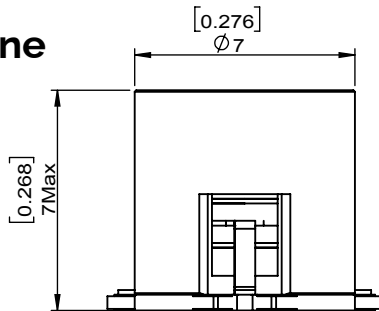


JCM5200T5900LM24P is a high power surface mount design with robust pins for perfect contact with the PCB while mounting. An ideal device for volume production and designed to handle high peak power for pulsed application.

Electrical Specification

Part Number	JCM5200T5900LM24P
Frequency (GHz)	5.200~5.900
Insertion Loss(dB)MAX	0.38
Isolation(dB)MIN	20.0
Return Loss(dB)MIN	20.0
Operating Temperature	-40°C~90°C
Power FWD/REV/PK(Watt)	-/-/240 Peak for pulse with 500usec and duty cycle 20%

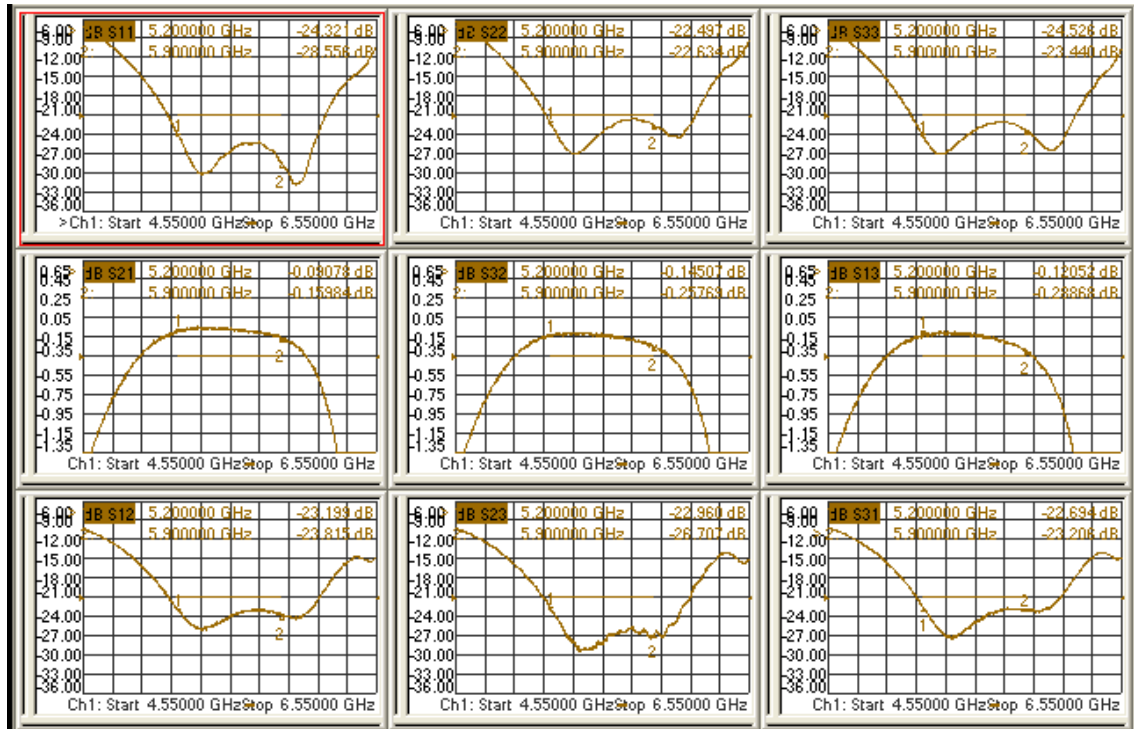
Outline



C Band Surface Mount Circulator

JCM5200T5900LM24P

Test Data



Features

- High pulsed power handling capability
- Low insertion loss
- High temperature stability
- RoHS & REACH Compliant

Applications

- Power amplifiers