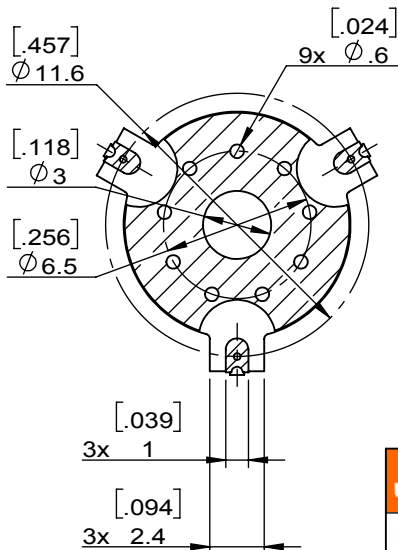
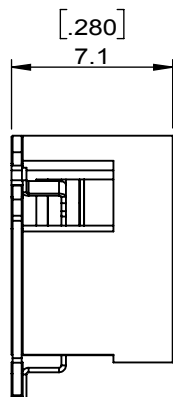
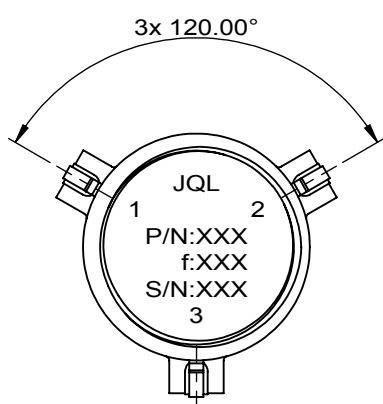
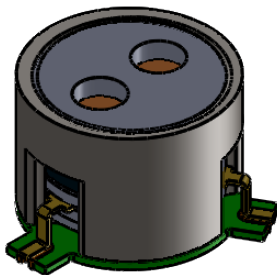
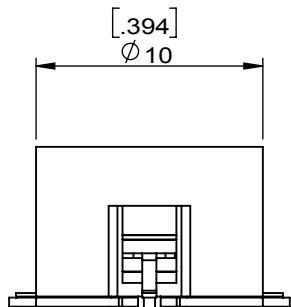


1		2		3		4		5		6	
Document No. QR4-700-T-003								REV.		DESCRIPTION	
REV. A/0								0		J.Z	
								10.18.2022		APPROVED HC.Qiu	



SPECIFICATIONS	
Part's Number	JCM3100T3500PT1
Frequency(GHz)	3.100~3.500
Direction	CW
Insertion Loss(dB)MAX	0.35@+25°C 0.40@-40~+85°C
Isolation(dB)MIN	20.0@+25°C 18.0@-40~+85°C
Return Loss(dB)MIN	20.0@+25°C 18.0@-40~+85°C
3rd IMD(dBc)MAX	-
Power FWD/REV/PK(Watt)	10/10/100,20%DC
Operating Temperature(°C)	-40~+85
Storage Temperature(°C)	-
2nd/3rd Harmonic(dBc)	-
Additional Notes	-

JQL JQL Technologies Corporation				
MATERIAL: STEEL		DWG NO: JCM3100T3500PT1		
SURFACE TREATMENT: SILVER PLATING		DWG BY:	J.Z	10.18.2022
DESCRIPTION: SMT CIRCULATOR		CHK'D BY:		SCALE
		APPV'D BY:		3:1
		Unit: mm[inch]	Tolerance: Liner: ±0.25 Anguar: ±0.5°	The First:
				A4



This document is the property of JQL Technologies Corporation. It cannot be copied, duplicated, used for manufacturing purposes or communicated to third party as a whole or partly, without the written consent of JQL Technologies Corporation.