

VHF Band Drop-In Circulator

JCD0170T0180EM150

Description:

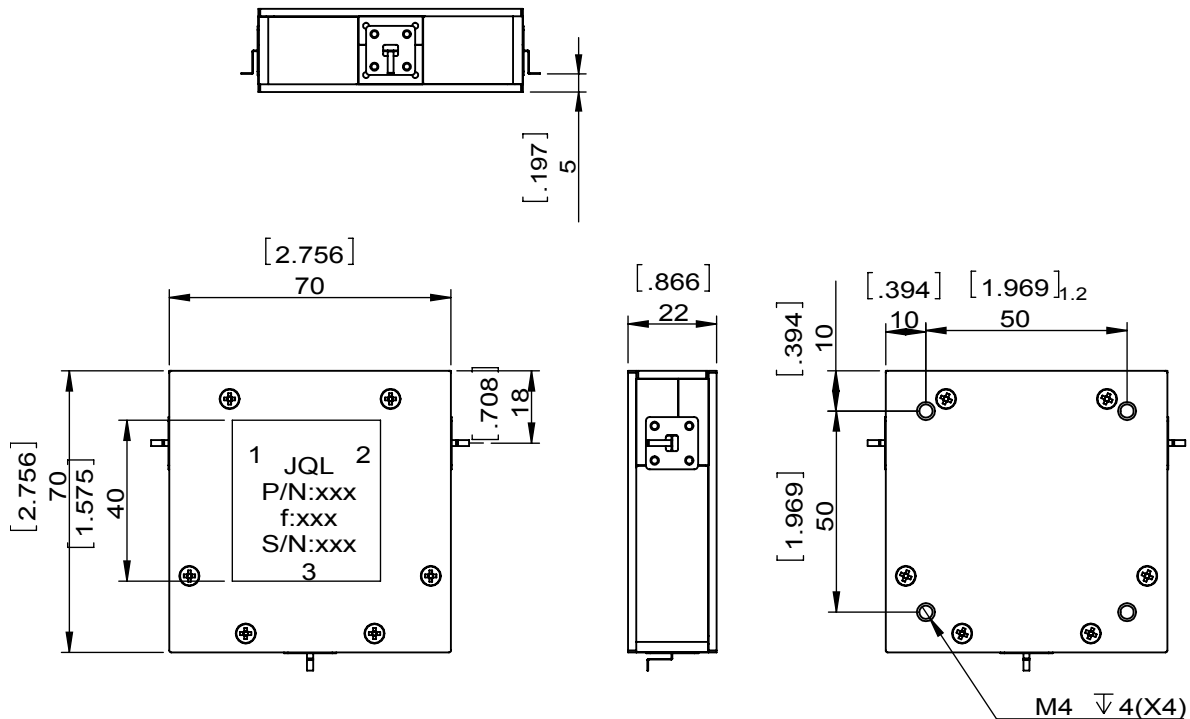


JCD0170T0180EM150 is a drop-in circulator in the frequency 0.170~0.180 GHz. The device is extremely stable over the temperature range of 10°C to +40°C, with maximum insertion loss of 0.25 dB and minimum return loss of 25.0dB. This circulator can handle a CW Power FWD/REV/PK(Watt) of 1500(TBD)/1500(TBD)/-

Electrical Specification

Part Number	JCD0170T0180EM150
Frequency (GHz)	0.170~0.180
Insertion Loss(dB)MAX	0.25
Isolation(dB)MIN	25.0
Return Loss(dB)MIN	25.0
Operating Temperature	+10~+40°C
Power FWD/REV/PK(Watt)	1500(TBD)/1500(TBD)/-
Tab(W×LG×THK)(mm[Inch])	1.5[0.060]X5.0[0.196]X0.4[0.016]

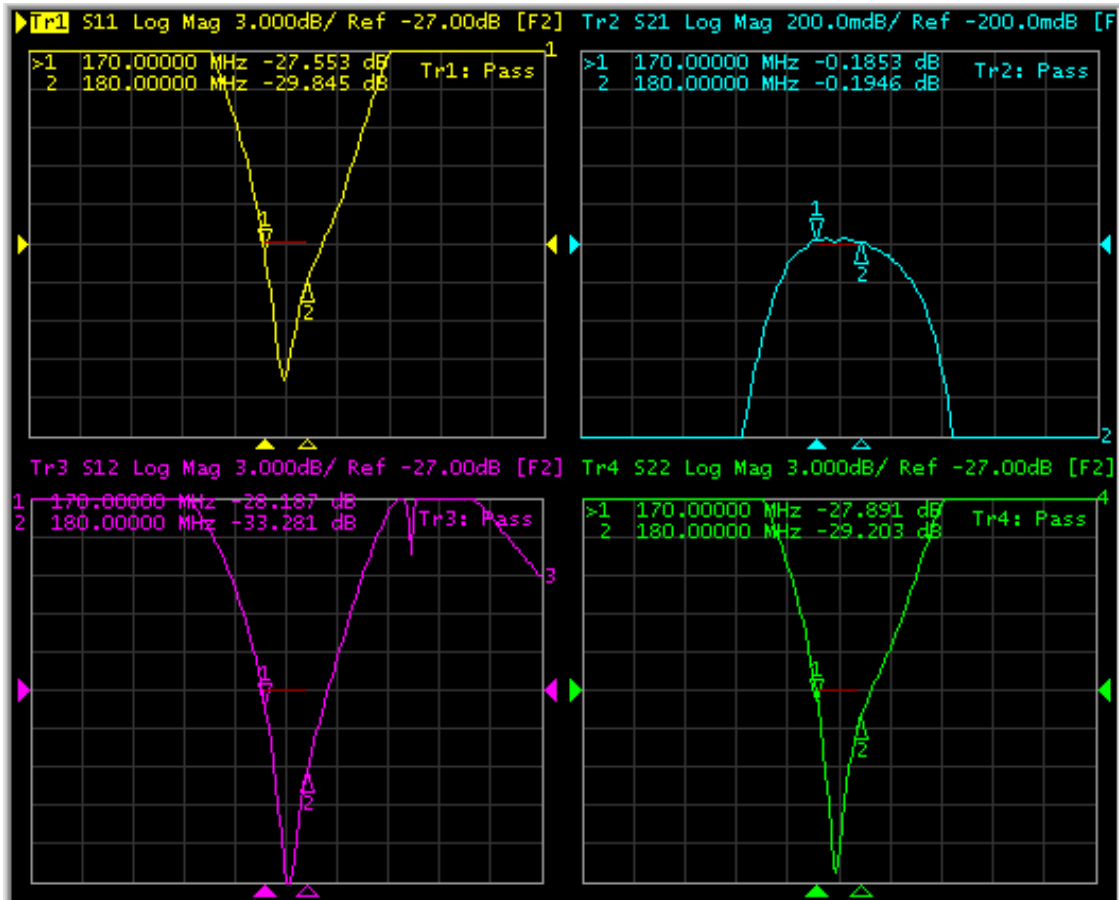
Outline



VHF Band Drop-In Circulator

JCD0170T0180EM150

Test Data



JQL TECHNOLOGIES
TECHNOLOGY ON THE MOVE