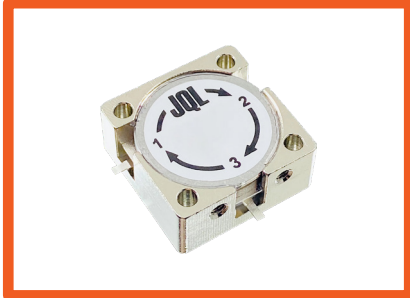


# S Band Drop-In Circulator

## JCD3700T3980SM10R

### Description:

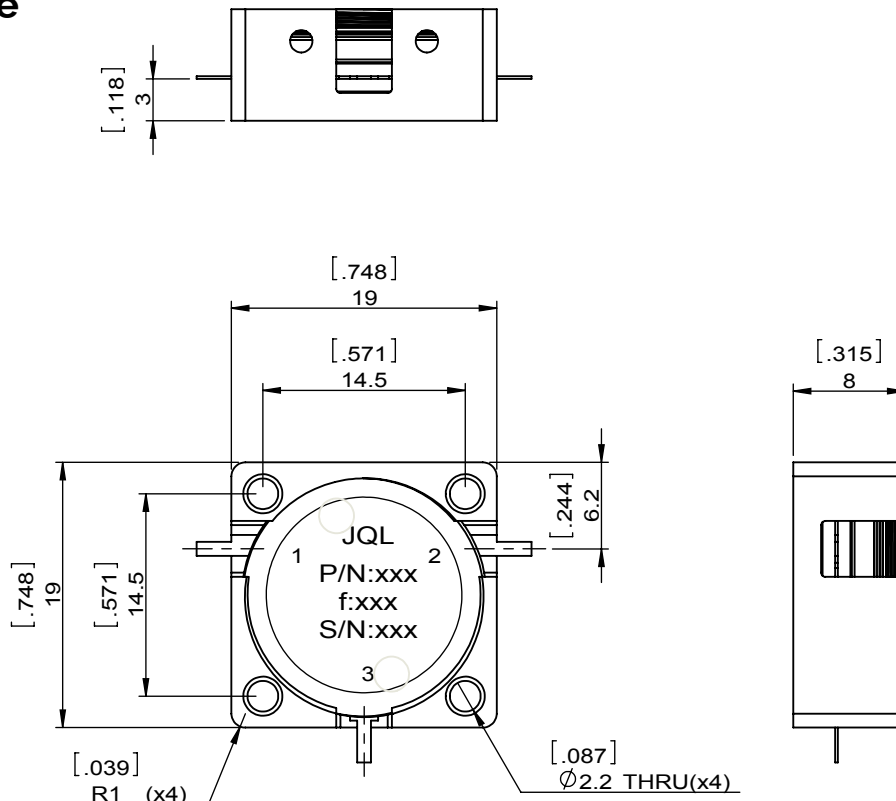


JCD3700T3980SM10R is a drop-in circulator in the frequency 3.700~3.980 GHz. The device is extremely stable over the temperature range of -40°C to +85°C, with maximum insertion loss of 0.25dB @+25°C & 0.30dB @-40~+85°C and minimum return loss of 20 dB. This circulator can handle a CW Power FWD/REV/PK(Watt) of 200/120/-

### Electrical Specification

Part Number	JCD3700T3980SM10R
Frequency (MHz)	3.700~3.980
Insertion Loss(dB)MAX	0.25 @+25°C    0.30 @-40~+85°C
Isolation(dB)MIN	22.0
Return Loss(dB)MIN	20.0
Operating Temperature	-40~+85
Power FWD/REV/PK(Watt)	200/120/-
Tab(W×LG×THK)(mm[Inch])	1.0[.039]x2.5[.098]x0.2[.008]

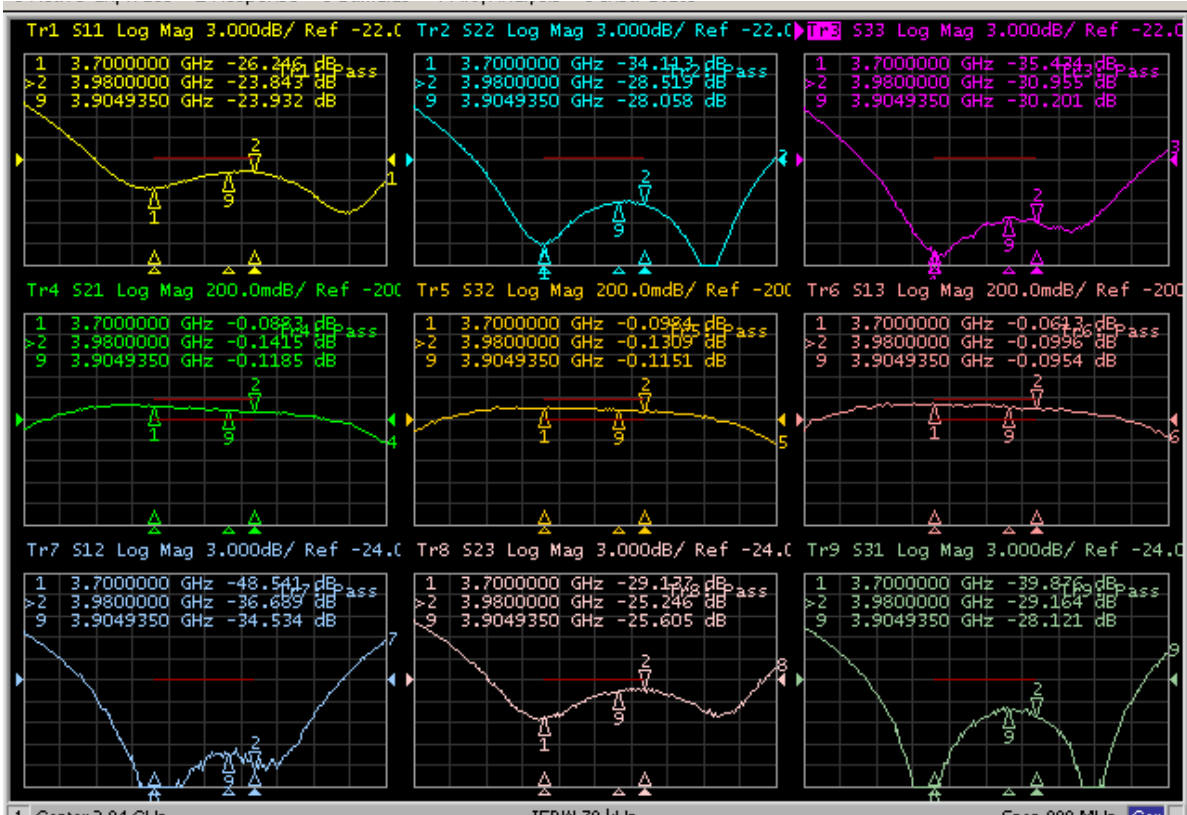
### Outline



# S Band Drop-In Circulator

## JCD3700T3980SM10R

### Test Data



### Applications

- 5G