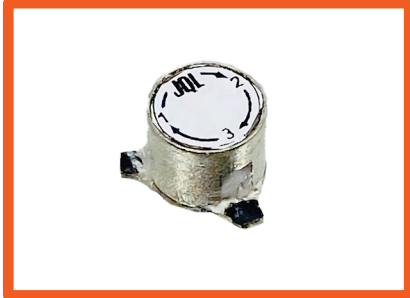


X Band Surface Mount Circulator

JCM10K2T11K0XM0

Description:

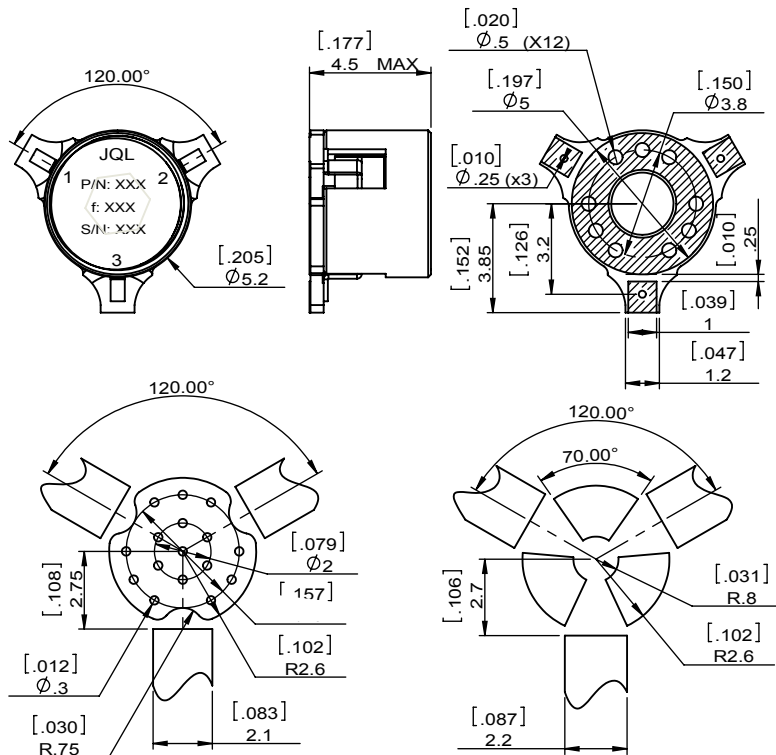


JCM10K2T11K0XM0 is a surface mount circulator that has the capability to handle very high pulsed power. This unit designed to handle a temperature range of -40 to +100 deg c and it is extremely stable with low insertion loss and high isolation.

Electrical Specification

Part Number	JCM10K2T11K0XM0
Frequency (GHz)	10.200~11.000
Insertion Loss(dB)MAX	0.50@+25°C 0.65@-40~+100°C
Isolation(dB)MIN	18.0@+25°C 16.0@-40~+100°C
Return Loss(dB)MIN	18.0@+25°C 16.0@-40~+100°C
Operating Temperature	-40°C~100°C
Power FWD/REV/PK(Watt)	-/-/150 Duty Cycle: 35% Pulse Width: 30μSec

Outline



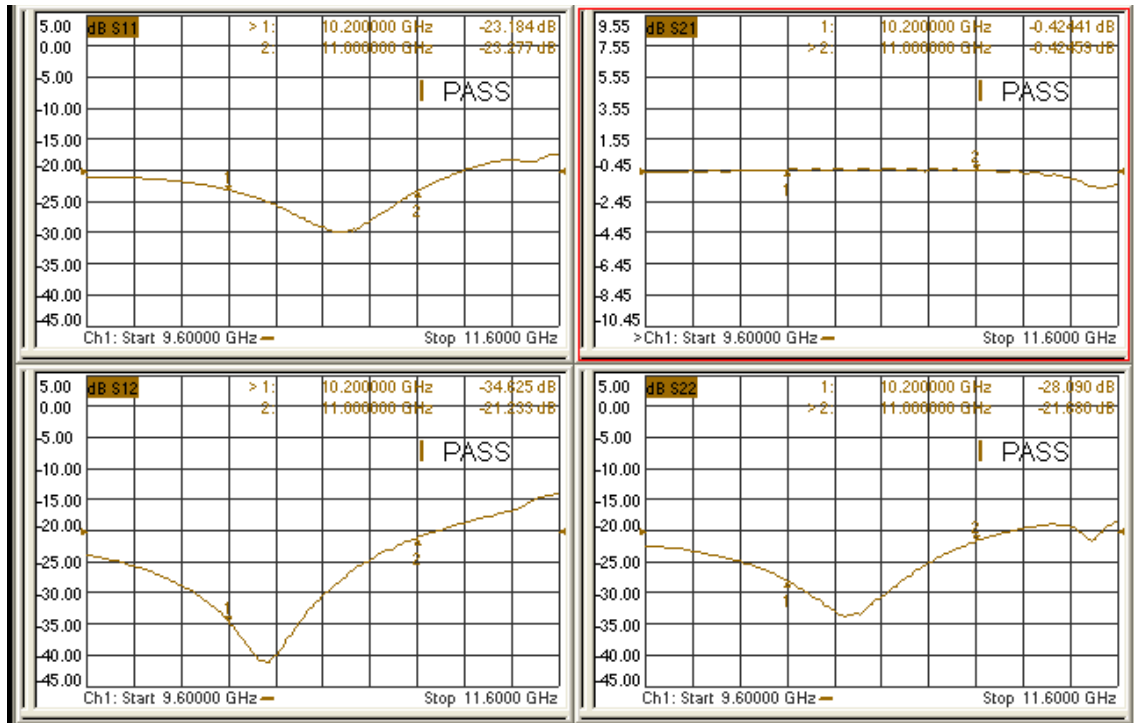
Copper Pattern
The PCB material is
ARLON AD255A

Soldermask Pattern

X Band Surface Mount Circulator

JCM10K2T11K0XM0

Test Data



Features

- High power handling capability
- Low insertion loss
- RoHS & REACH compliant

Applications

- Military & Commercial radar applications
- Power Amplifiers