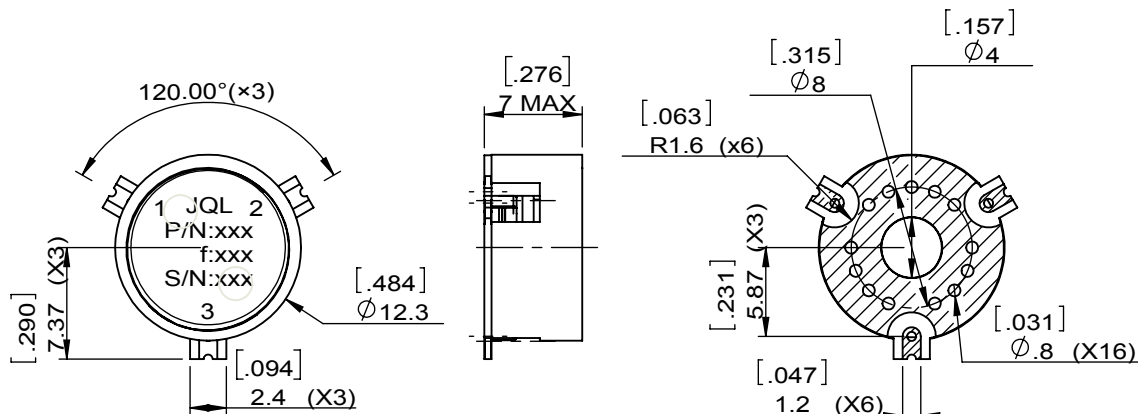
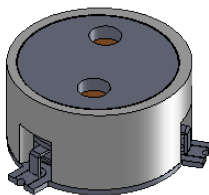
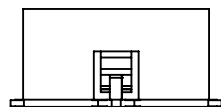
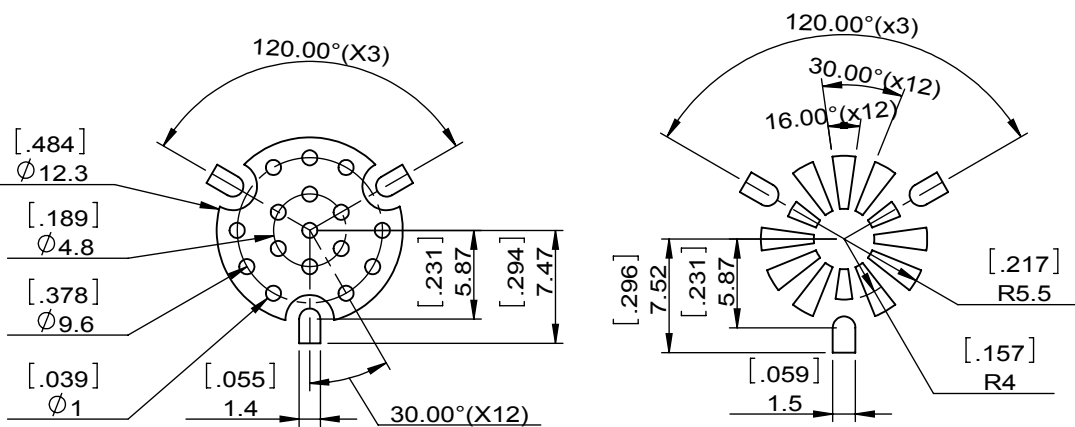


|              |               |      |     |      |             |         |            |          |  |   |  |
|--------------|---------------|------|-----|------|-------------|---------|------------|----------|--|---|--|
| 1            |               | 2    |     | 3    |             | 4       |            | 5        |  | 6 |  |
| Document No. | QR4-700-T-003 | REV. | A/0 | REV. | DESCRIPTION | REVISOR | DATE       | APPROVED |  |   |  |
|              |               |      |     | 0    |             | J.Z     | 10.15.2022 | HC.Qiu   |  |   |  |



| SPECIFICATIONS                  |                 |
|---------------------------------|-----------------|
| Part's Number                   | JCM4400T6000VM3 |
| Frequency(GHz)                  | 4.400~6.000     |
| Direction                       | CW              |
| Insertion Loss(dB)MAX           | 0.5             |
| Return Loss(dB)MIN              | 17.0            |
| Isolation(dB)MIN                | 17.0            |
| 3rd IMD(dBc)MAX                 | -               |
| Power FWD/REV/PK(Watt)          | 30/30/100       |
| Operating Temperature(°C)       | -40~+85         |
| Storage Temperature(°C)         | -               |
| 2nd/3rd Harmonic(dBc)           | -               |
| Termination/Attenuator(Watt/dB) | -               |
| Tab(W×LG×THK)(mm[Inch])         | -               |
| Additional Notes                |                 |



Copper Parttern

Soldermask Parttern



This document is the property of JQL Technologies Corporation. It cannot be copied, duplicated, used for manufacturing purposes or communicated to third party as a whole or partly, without the written consent of JQL Technologies Corporation.

|   |  |   |            |            |
|---|--|---|------------|------------|
| <b>JQL JQL Technologies Corporation.</b>    |  |   |            |            |
| <b>MATERIAL:</b><br>STEEL                   |  | <b>DWG NO:</b><br>JCM4400T6000VM3           |            |            |
| <b>SURFACE TREATMENT:</b><br>Silver Plating |  | DWG BY:                                     | J.Z        | 10.15.2022 |
| <b>DESCRIPTION:</b><br>SMT CIRCULATOR       |  | CHK'D BY:                                   |            | SCALE      |
|   |  | APPV'D BY:                                  |            | 2:1        |
| Unit:<br>mm[inch]                           |  | Tolerance:<br>Liner: ±0.25<br>Anguar: ±0.5° | The First: | A4         |