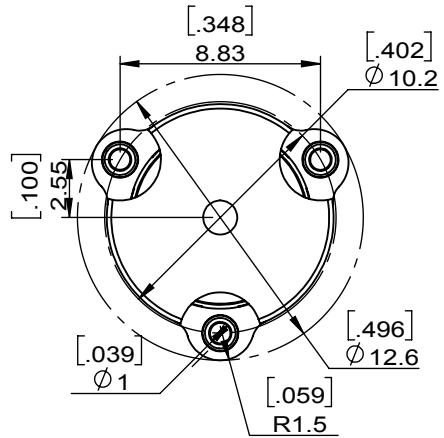
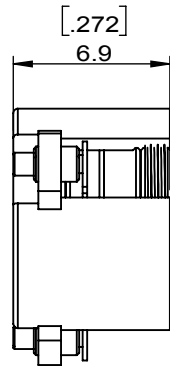
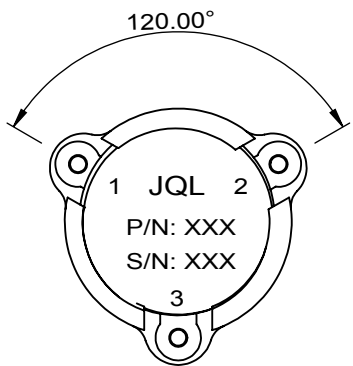
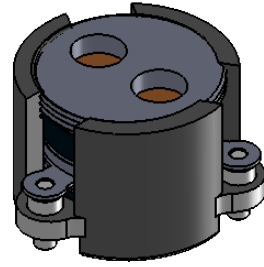
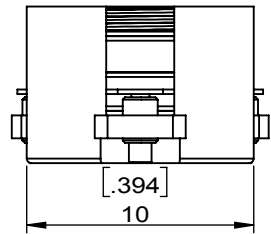
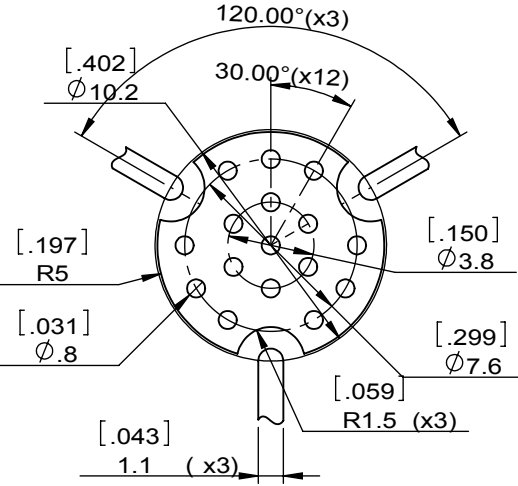


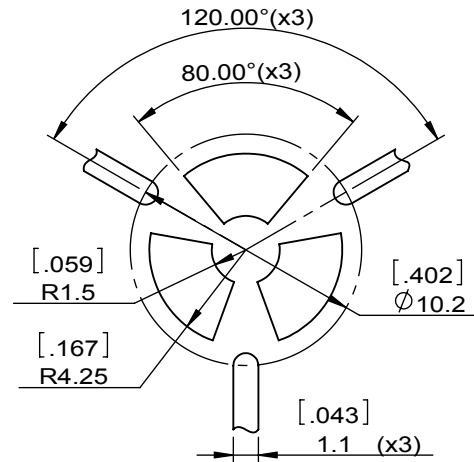
1		2		3		4		5		6	
Document No.	QR4-700-T-003	REV.	A/0	REV.	DESCRIPTION	REVISOR	DATE	APPROVED			
				0		J.Z	10.09.2022	HC.Qiu			



SPECIFICATIONS	
Part's Number	JCM5100T5900PT10P
Frequency(GHz)	5.100~5.900
Direction	CW
Insertion Loss(dB)MAX	0.40@+25°C 0.45@-40~+85°C
Isolation(dB)MIN	22.0@+25°C 20.0@-40~+85°C
Return Loss(dB)MIN	22.0@+25°C 20.0@-40~+85°C
3rd IMD(dBc)MAX	-
Power FWD/REV/PK(Watt)	80CW /80CW /100CW
Operating Temperature(°C)	-40~+85
Storage Temperature(°C)	-
2nd/3rd Harmonic(dBc)	-
Port impedance	-
Additional Notes	



Copper Pattern



Soldermask Pattern

JQL JQL Technologies Corporation.				
MATERIAL: STEEL		DWG NO: JCM5100T5900PT10P		
SURFACE TREATMENT: SILVER PLATING		DWG BY:	J.Z	10.09.2022
DESCRIPTION: SMT CIRCULATOR		CHK'D BY:		SCALE
		APPV'D BY:		3:1
Unit: mm[inch]		Tolerance: Liner: ±0.25 Anguar: ±0.5°	The First: 	
				A4



This document is the property of JQL Technologies Corporation. It cannot be copied, duplicated, used for manufacturing purposes or communicated to third party as a whole or partly, without the written consent of JQL Technologies Corporation.