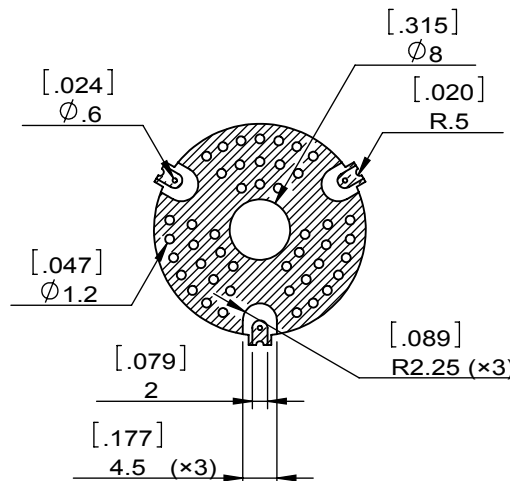
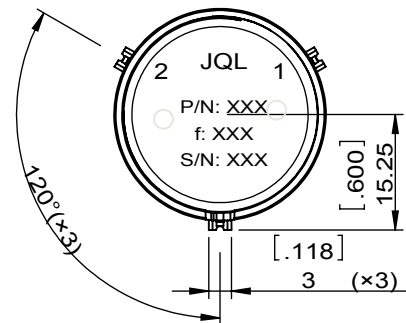
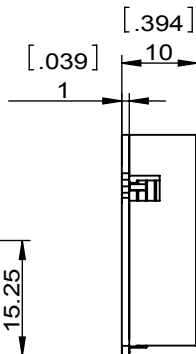
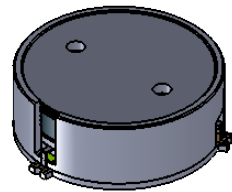
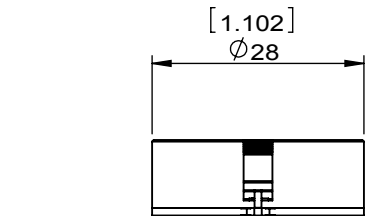
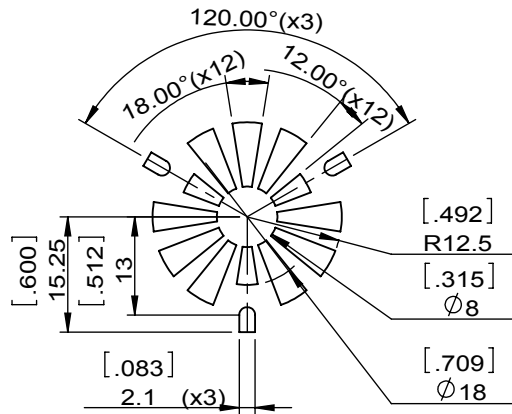
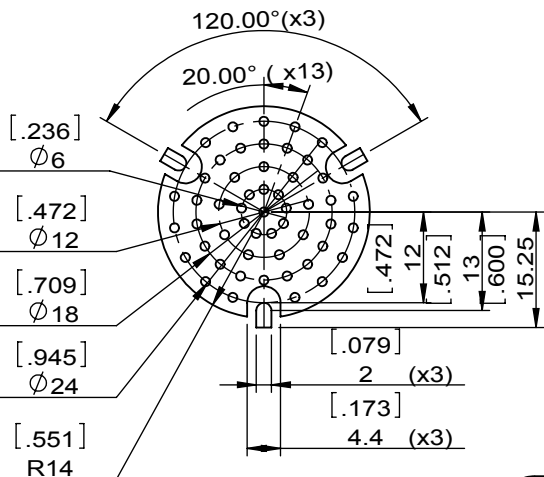


1		2		3		4		5		6	
Document No.	QR4-700-T-003	REV.	A/0	REV.	DESCRIPTION	REVISOR	DATE	APPROVED			
				0		J.Z	09.26.2022	HC.Qiu			



SPECIFICATIONS	
Part's Number	JIM0406T0421A1C
Frequency(MHz)	0.406~0.421
Direction	CCW
Insertion Loss(dB)MAX	0.6
Isolation(dB)MIN	20.0
Return Loss(dB)MIN	20.0
3rd IMD(dBc)MAX	-
Power FWD/REV/PK(Watt)	5/5/10
Operating Temperature(°C)	-20~+75
Storage Temperature(°C)	-
2nd/3rd Harmonic(dBc)	-
Termination/Attenuator(Watt/dB)	10/-
Tab(W×LG×THK)(mm[Inch])	-
Additional Notes	-



Copper Pattern

Soldermask Pattern



This document is the property of JQL Technologies Corporation. It cannot be copied, duplicated, used for manufacturing purposes or communicated to third party as a whole or partly, without the written consent of JQL Technologies Corporation.

JQL JQL Technologies Corporation

MATERIAL: STEEL	DWG NO: JIM0406T0421A1C		
SURFACE TREATMENT: NICKEL PLATING	DWG BY: J.Z	09.26.2022	SCALE
DESCRIPTION: SMT ISOLATOR	CHK'D BY:		1:1
	APPV'D BY:		A4
Unit: mm[inch]	Tolerance: Liner: ±0.25 Anguar: ±0.5°	The First:	