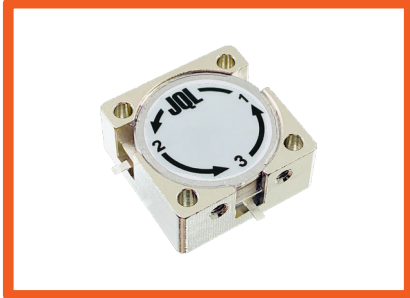


# S Band Drop-In Circulator

## JCD2700T3500SM15C

### Description:

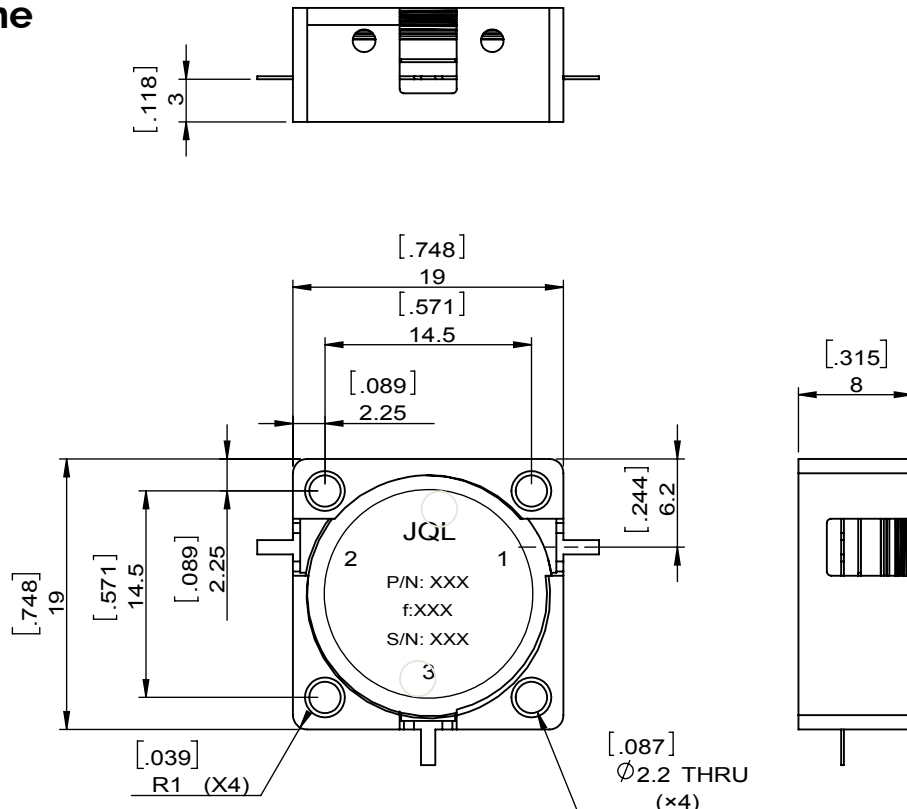


JCD2700T3500SM15C is a drop-in circulator in the frequency 2.700~3.500GHz. The device is extremely stable over the temperature range of -40°C to +85°C, with maximum insertion loss of 0.4dB and minimum return loss of 18 dB. This circulator can handle a CCW Power FWD/REV/PK(Watt) of 150/150/-

### Electrical Specification

Part Number	JCD2700T3500SM15C
Frequency (MHz)	2.700~3.500
Insertion Loss(dB)MAX	0.4
Isolation(dB)MIN	18.0
Return Loss(dB)MIN	18.0
Operating Temperature	-40~+85
Power FWD/REV/PK(Watt)	150/150/-
Tab(W×LG×THK)(mm[Inch])	0.6[.024]x2.5[.10]x0.2[.008]

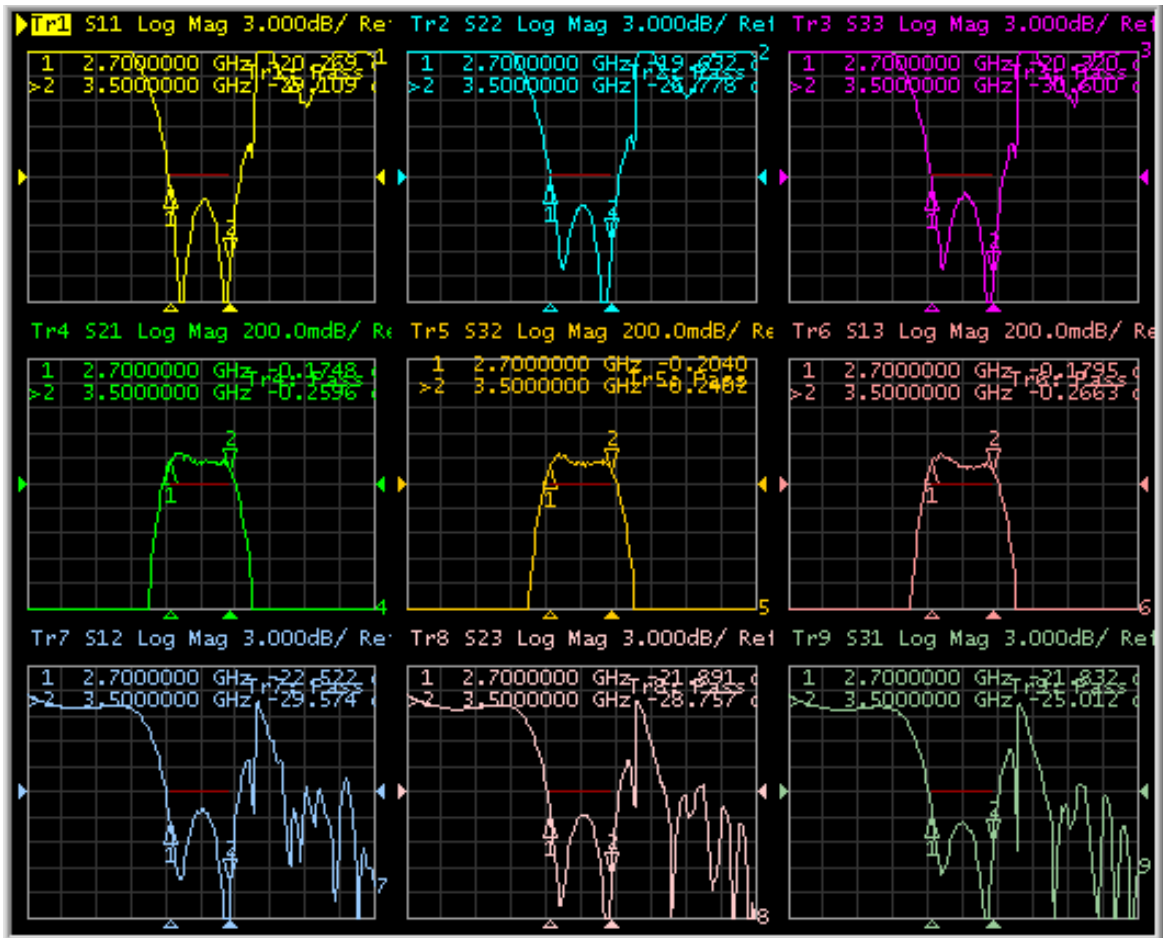
### Outline



# S Band Drop-In Circulator

## JCD2700T3500SM15C

### Test Data



### Applications

- Radar