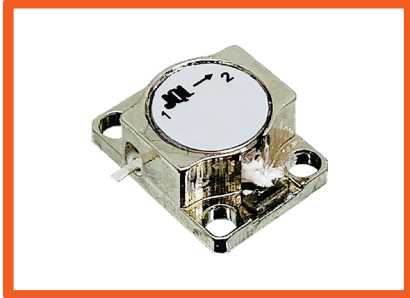


Ku Band Drop in Isolator

JID12K6T12K9CM0

Description:

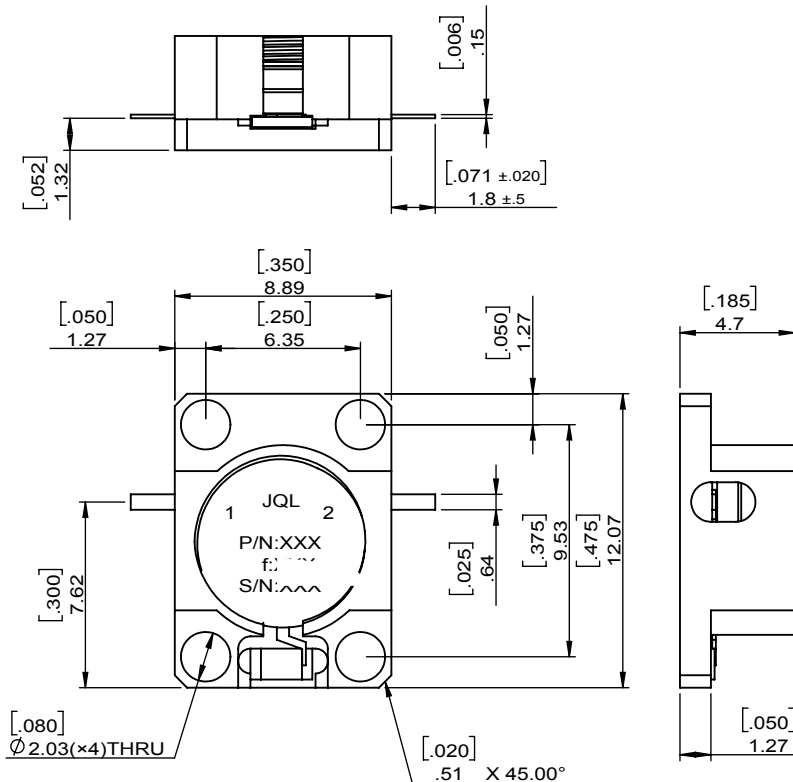


JID12K6T12K9CM0 is a drop-in isolator in the frequency 12.600~12.900 GHz. The device is extremely stable over the temperature range of -40°C to +85°C, with maximum insertion loss of 0.50dB and minimum return loss of 20.0dB. It can handle a CW Power FWD/REV/PK(Watt) of 5/5/5

Electrical Specification

| Part Number | JID12K6T12K9CM0 |
|-------------------------|-----------------------------------|
| Frequency (GHz) | 12.600~12.900 |
| Insertion Loss(dB)MAX | 0.50 |
| Isolation(dB)MIN | 20.0 |
| Return Loss(dB)MIN | 20.0 |
| Operating Temperature | -40°C~85°C |
| Power FWD/REV/PK(Watt) | 5/5/5 |
| Tab(W×LG×THK)(mm[Inch]) | 0.635[.025]x1.78[.070]x0.15[.006] |

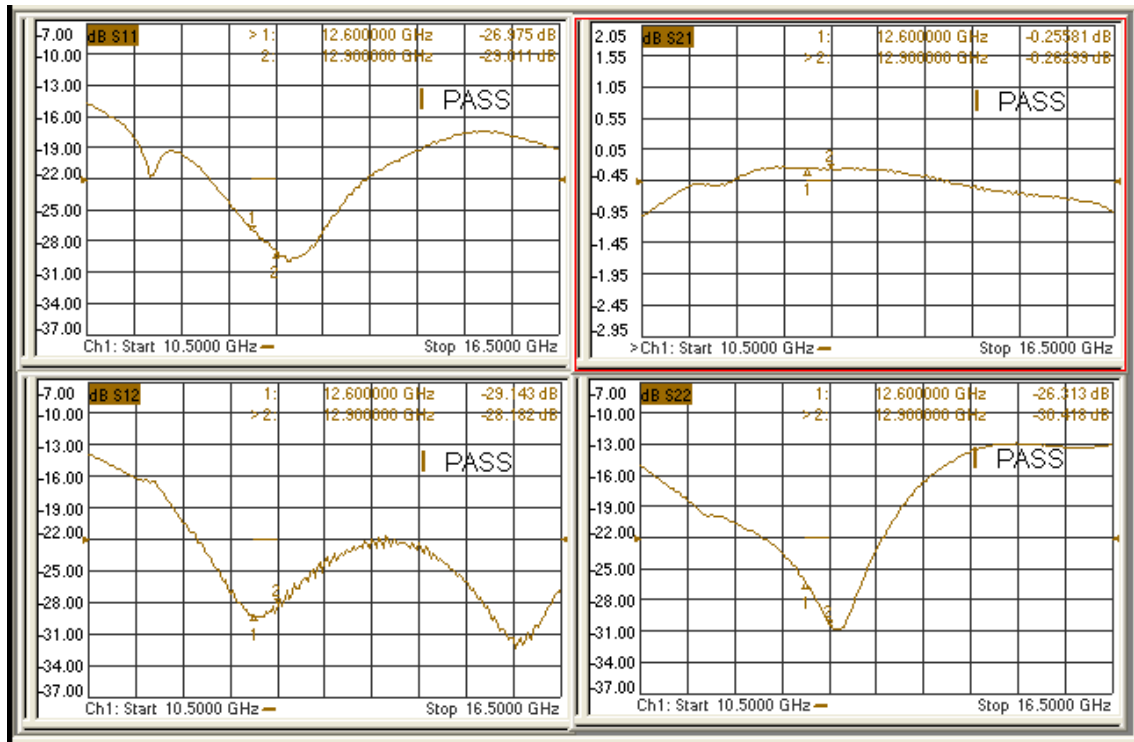
Outline



Ku Band Drop in Isolator

JID12K6T12K9CM0

Test Data



Applications

- SATCOM

JQL TECHNOLOGIES
TECHNOLOGY ON THE MOVE